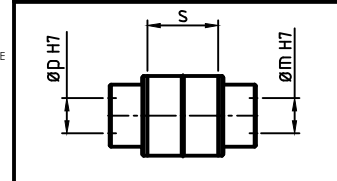


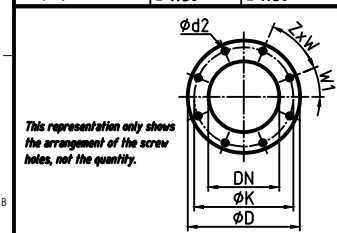
COUPLING		
coupling measures	spacer length "s"	hole diameter
pump side	5	38
motor side		65



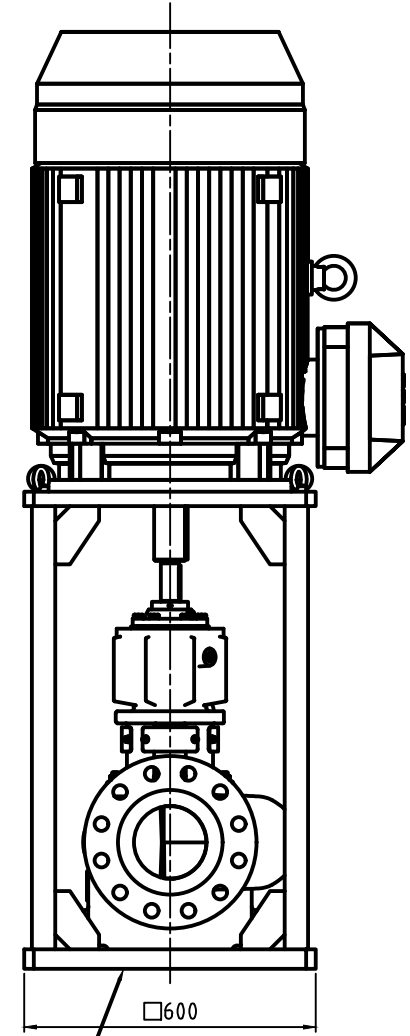
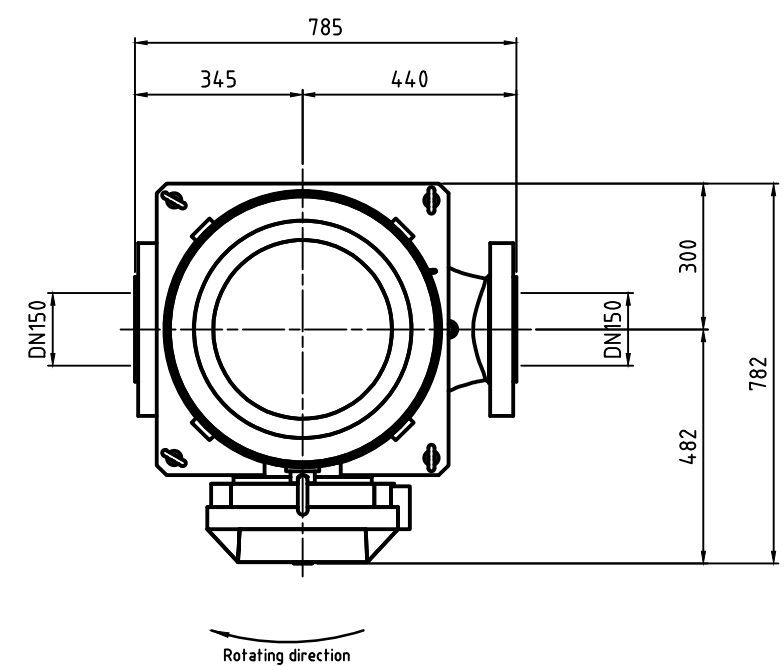
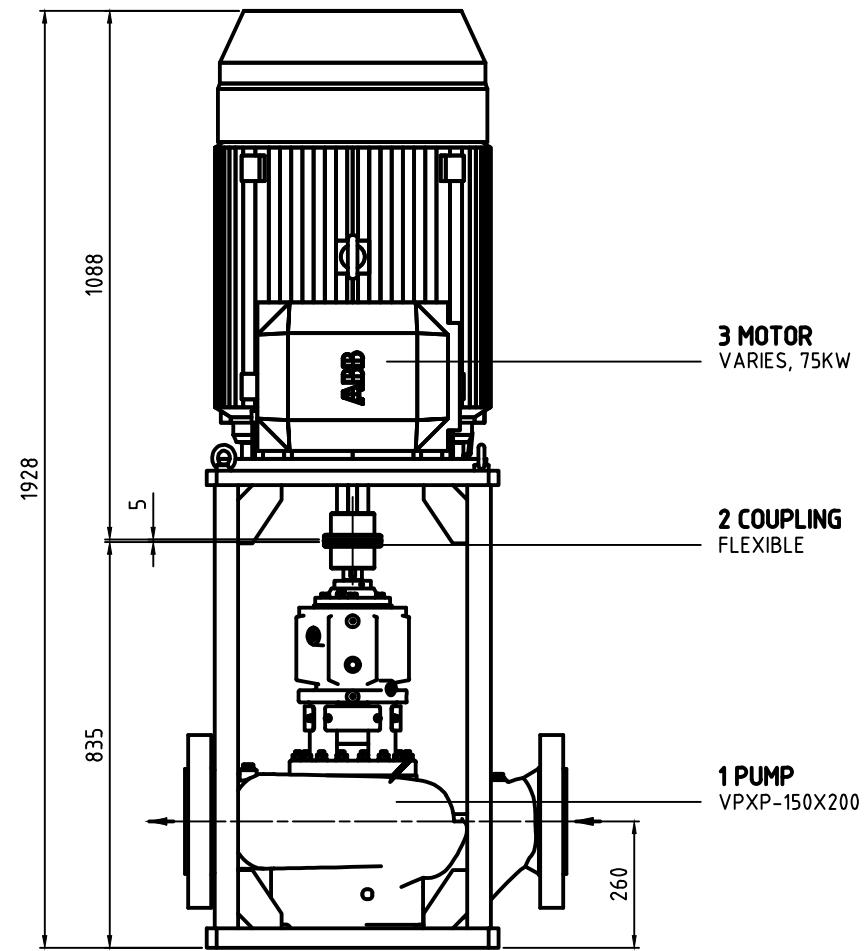
WEIGHTS	
PUMP	310 kg
MOTOR	665 kg
BASEPLATE	- kg
COUPLING	12 kg
ACCESSORIES	38 kg
TOTAL	1025 kg



maximum branch loads / branch torques	suction branch	discharge branch
Fx [N]	± 5000	± 5000
Fy [N]	± 4050	± 4050
Fz [N]	± 4500	± 4500
Mx [Nm]	± 2500	± 2500
My [Nm]	± 2050	± 2050
Mz [Nm]	± 1750	± 1750



flange measures according to ANSI B 16.5 RF - Class 600	suction side		pressure side
	nominal width	DN	DN
nominal width	150/6"	150/6"	150/6"
flange diameter	D	355.6/14"	355.6/14"
hole circle diameter	K	292.1/11.5"	292.1/11.5"
hole diameter	d2	Ø28.4/1.12"	Ø28.4/1.12"
quantity	Z	12	12
angle	W	30°	30°
	W1	15°	15°



M12-1.75 X 14 DEEP, 4 PLACES ON 180mm B.C. IN PUMP
C'SUNK FOR M12 HEAD DIA. 20MM X 13.5 DEEP IN FRAME

- SHEET NOTES:**
1. NOT TO SCALE
 2. TOLERANCES PER ISO8015
 3. GENERAL TOLERANCES PER ISO 2768-CL
 4. DRAWING TOLERANCES PER DIN ISO 5456-2

B - ADDED MOUNTING HOLE DETAILS		HT	06/03/20
A - PRELIMINARY RELEASE		JL	11/20/17
REV.	ECN NO.	DESCRIPTION	BY DATE
REVISIONS			
UNLESS OTHERWISE SPECIFIED:		1717 Doolittle Drive San Leandro CA 94577 energyrecovery.com P 510.483.7370 F 510.483.7371	
DIMENSIONS ARE IN INCHES		PRELIMINARY	
TOLERANCES:		DRAWING STATUS	
FRACTIONAL: ± 1/32"		DRAWN	JL 11/20/17
ANGULAR: MACH: 5° BEND ± 1°		CHECKED	-
TWO PLACE DECIMAL: ± 0.01"		ENG APPR	-
THREE PLACE DECIMAL: ± 0.005"		TITLE: VPXP 150x200, 75kW, GENERAL OUTLINE	
FOUR PLACE DECIMAL: ± 0.002"		SIZE DWG. NO. REV	
DIMENSIONING AND TOLERANCING PER ANSI Y14.5M (LATEST)		D VPXP150X200GA B	
PROPRIETARY		THIRD ANGLE PROJECTION	
THE INFORMATION CONTAINED IN THIS DRAWING IS THE SOLE PROPERTY OF ENERGY RECOVERY INC. ANY REPRODUCTION IN PART OR AS A WHOLE WITHOUT THE WRITTEN PERMISSION OF ENERGY RECOVERY INC. IS PROHIBITED.		WEIGHT: SCALE: 1:1 SHEET 1 OF 1	
© ENERGY RECOVERY INC			