
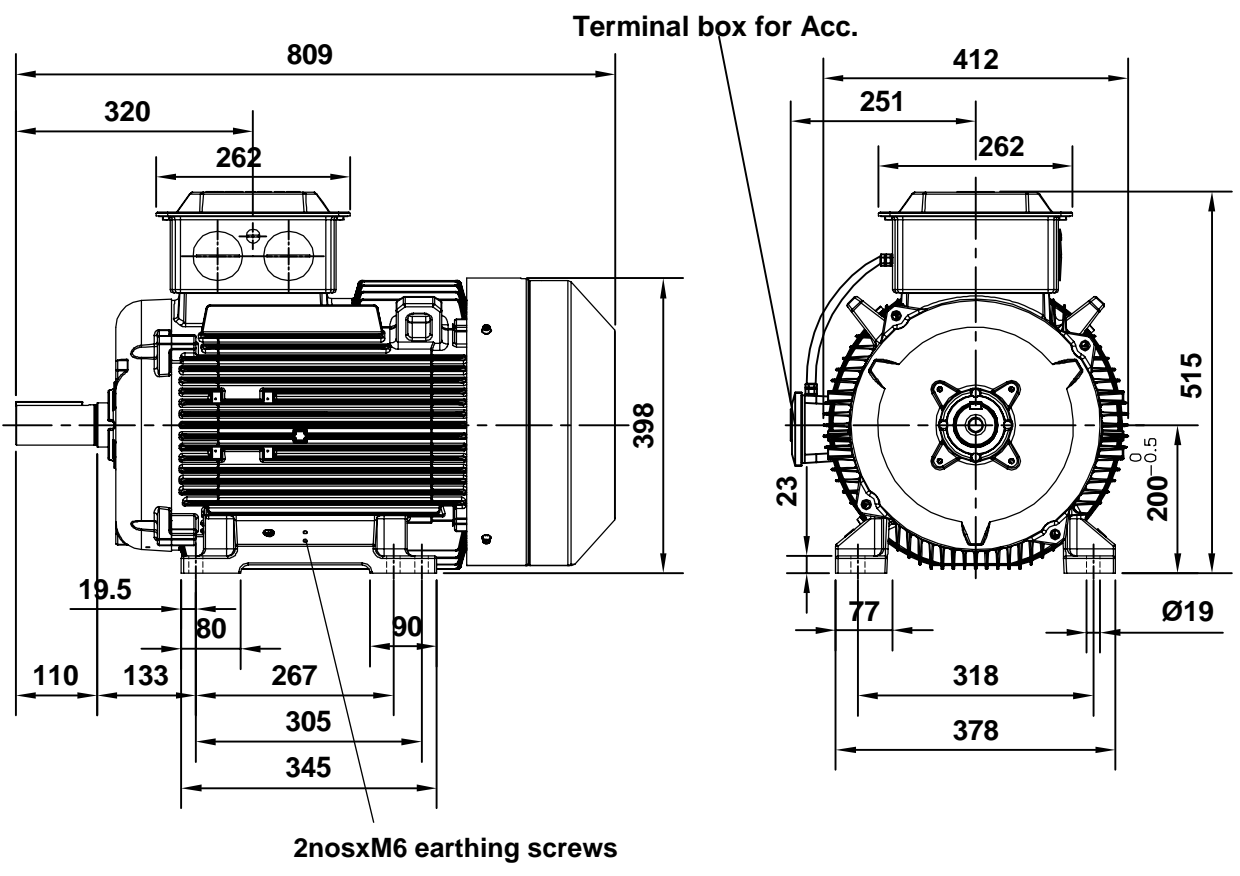
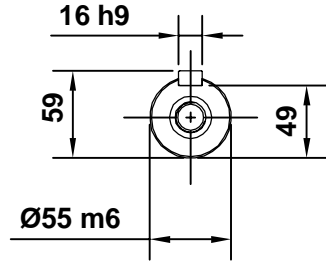
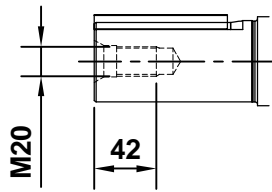


IEC LV Motors		Technical Data Sheet				
Project		Location				
Department/Author		Customer name		Customer ref	Item name	
Our ref.		Rev/Changed by	Date of issue	Saving ident	Pages	
		A	6/12/2025	untitled (1).xslm	1.00001	
					1(3)	
No.	Definition	Data	Unit	Remarks		
1	Product	TEFC, 3-phase, squirrel cage induction motor				
2	Product code	3GBA 201 410-ADDIN			Calc. ref.	3GZH021020-24
3	Type/Frame	M2BAX 200MLA 2				
4	Mounting	IM1001, B3(foot)				
5	Rated output P _N	30	kW			
6	Service factor	1				
7	Type of duty	S1 100%				
8	Rated voltage U _N	415	VD	+10, -10 %		
9	Rated frequency f _N	50	Hz	+5, -5 %		
10	Rated speed n _N	2957	r/min			
11	Rated current I _N	51	A			
12						
13	Starting current I _s /I _N	7.7				
14	Nominal torque T _N	97	Nm			
15	Locked rotor torque T _s /T _N	2.9				
16	Maximum torque T _{max} /T _N	3.3				
17						
18						
Load characteristics		Load %	Current A	Efficiency %	Power factor	
19	PLL determined from residual loss	100	51	93.3 / IE3	0.87	
20		75	39.3	93.6	0.85	
21		50	28.7	93.2	0.78	
22						
23	Thermal withstand time hot	13	s			
24	Thermal withstand time cold	25	s			
25	Insulation class / Temperature class	F / B				
26	Ambient temperature	55	°C			
27	Altitude	1000	m.a.s.l.			
28	Degree of protection	IP55				
29	Cooling system	IC411				
30	Bearing DE/NDE	6312-2Z/C3 - 6209-2Z/C3				
31	Sound pressure level (LP dB(A) 1m)	80	dB(A)	at no-load		
32	Moment of inertia J = ¼ GD2	0.192	kg-m2			
33	Position of terminal box	Top				
34	Direction of rotation	Bi-directional				
35	Weight of rotor	53	kg			
36	Total weight of motor	230	kg			
37	Paint shade	Munsell Blue				
38	Cable size	2R x 3C x 120 sq.mm. (2nos. * M50)				
39	Vibration	As Per IS 12075				
40						
41						
42	Method of Starting	VFD				
43	Efficiency level IE3 are at Sinusoidal supply					
44	Temperature rise is limited to Class B upto 19.1kW					
45	Speed range 30% to 100%					
46						
47						
48						
Specialties						
49	CE Marking					
50	55deg Ambient					
51	Space heater, PTC 3nos.					
52	SS Nameplate, SS Hardware					
53	VPI Treated					
54	Jacking bolt provision					
Remarks:						
Applicable standards: IS 12615:2018, IEC 60034-30-1:2014						

All performance values are subject to IS/IEC tolerances



Motor Dimension Print		Motor Type : M2BAX 200ML 2-6P (IE3)	Document N° : 3GZH500020-60
Description : Motor IE3 foot mounted IM1001 (Separate box for accessories)			
Unit : ABB, LV Motors, India	Issued by : DKS	Replaces :	
Date : 2016-06-23	Approved by : SA	Replaced by :	
ABB India Ltd.	Customer Reference :		ABB