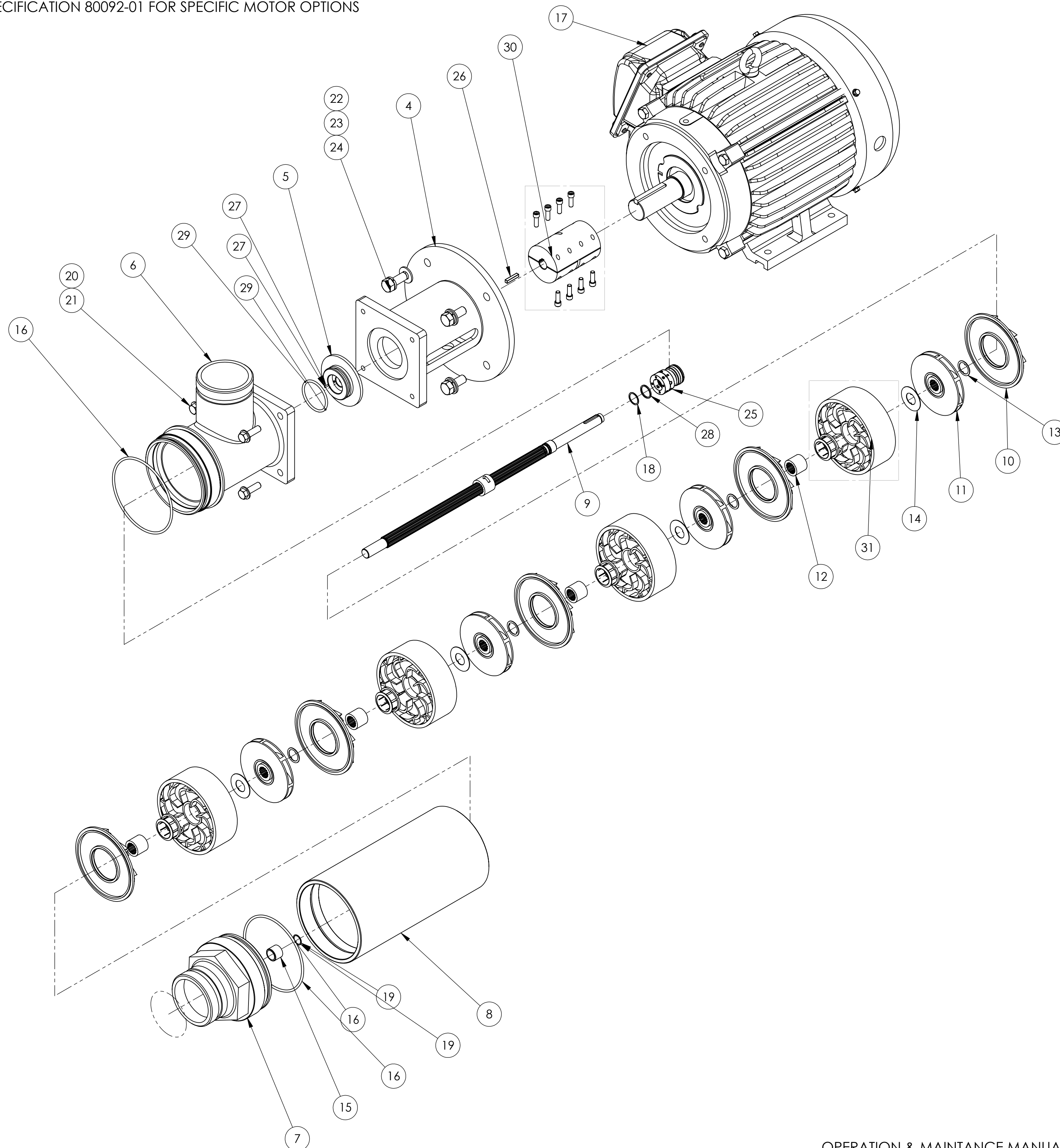


NOTES, UNLESS OTHERWISE SPECIFIED:

1. COAT STEPPED COUPLING BORES AND ALL THREADED FASTENERS WITH ANTI-SIEZE COMPOUND AT ASSEMBLY.
2. USE REQUIRED QTY OF SPACER WASHERS TO ACHIEVE SPACING OUTLINED IN THE OPERATIONS AND MAINTANCE MANUAL.
3. ENERGY RECOVERY INC., RESERVES THE RIGHT TO MAKE CHANGES AT ANY TIME WITHOUT NOTICE.
4. SEE SPECIFICATION 80092-01 FOR SPECIFIC MOTOR OPTIONS



BILL OF MATERIALS				
ITEM NO.	50001-01/QTY.	PART NUMBER	DESCRIPTION	MATERIAL
1	-	51218-01	HOUSING GUARD (CE ONLY, NOT SHOWN)	VINYL
2	-	30208-01	TAG, HP-PUMP, CE CERTIFICATION (CE ONLY, NOT SHOWN)	ALUM
3	-	30024-01	LABEL, SERIAL NUMBER	ALUM
4	1	51000-01	ADAPTER, MOTOR, FINISHED, HP-PUMP, ALUMINIUM	ALUM
5	1	51008-01	PLATE, SEAL, HP-PUMP, AL6XN	AL6XN
6	1	51066-01	HOUSING, SUCTION, IC, HP-PUMP, AL6XN	AL6XN
7	1	51064-01	END-CAP, FINISHED, IC, HP-PUMP, AL6XN	AL6XN
8	1	51011-02	SHELL, HP-8504, HP-PUMP, AL6XN	AL6XN
9	1	51053-01	SHAFT, HP-8504, ASSY, ALL-SPLINE, AL6XN	AL6XN
10	5	10142-01	DIFFUSER, PLATE, PUMP, 8000, NORYL	NORYL
11	4	10145-01	IMPELLER, PUMP, 8000, NORYL	NORYL
12	4	51025-01	BEARING, JOURNAL, HP-PUMP, AL6XN	AL6XN
13	8	51027-01	WASHER, SPACER, HP-PUMP, AL6XN	AL6XN
14	4	51026-01	WASHER, THRUST, HP-PUMP, AL6XN	AL6XN
15	1	51003-01	BUSHING, SLEEVE, HP-PUMP, RULON	RULON
16	2	10163-01	O-RING, EPDM, 249	EPDM
17	1	51230-01	MOTOR, 7.5HP, 380V/50HZ, 460V/60HZ, 213TC, B34R, TECO	-
18	1	10066-01	RING, RETAINING, SHAFT, .750", 276	C276
19	1	10061-01	RING, RETAINING, SHAFT, .625", 276	C276
20	4	10038-01	WASHER, FLAT, 3/8" ID, 316	316 SS
21	4	10070-01	SCREW, HEX-HEAD, 3/8"-16, X 1.25", 316	316 SS
22	4	10068-01	WASHER, FLAT, 1/2" ID, .875" OD, 18-8	18-8 SS
23	4	10044-01	WASHER, LOCK, 1/2" ID, 316	316 SS
24	4	10067-01	SCREW, HEX-HEAD, 1/2"-13, X 1.25", 316	316 SS
25	1	10123-01	SEAL, MECHANICAL, SHAFT, 316	316SS
26	1	51041-01	KEY, CUT, 3/16" SQ, X 1.00", SHAFT, HP-PUMP, 316	316 SS
27	1	10117-01	DOWEL, PIN, 3/32" DIA, X 1/4", NSF, ACE	ACETAL
28	1	10122-01	SPACER, .0875" OD, .75" ID, X .06", PVC	PVC
29	1	10160-01	O-RING, EPDM, 225	EPDM
30	1	51029-01	COUPLING, SHAFT, RIGID, STEPPED, 5/8" X 1-3/8", HP-PUMP, TIT	TITANIUM
31	4	10138-01	DIFFUSER, BOWL, PUMP, 8000, NORYL	NORYL

TOP LEVEL ASSEMBLIES	50001-01	50001-01	50001-31	50001-32
MOTOR CONFIG.:	460V/60HZ	380V/50HZ	460V/60H	380V/50H
MOTOR P/N:	51230-01	51230-01	51230-31	51230-31
STANDARD MOTOR - DUAL VOLTAGE - 460V/60HZ, 380V/50HZ	X	X		
STANDARD MOTOR - DUAL VOLTAGE - 460V/60HZ, 380V/50HZ - CE CERT			X	X

06	0749	REMOVED SCREWS OF COUPLING; BUSHING OF DIFFUSER OUT OF BOM	KT	6/10/22
-	0742	QTY. FOR ITEM P/N: 51218-01 CHANGED FROM 1 TO 2.	AL	10/05/21
05	0732	UPDATED 30205-01 CE TAG TO 30208-01; ADDED NOTE 1 & DIMS OF CENTER OF MASS ON SHEET 2	YR	05/13/21
04	0722	MADE CHANGES TO THE OAL DUE TO NEW MOTORS, ADDED CONFIGURATION TABLE, MADE CHANGES TO BEARING P/N	SD	5/4/2021
03	-	ADDED NEW TABULATION -07. UPDATED SHEET FORMAT	AKP	8/25/17
03	-	ADDED NEW TABULATION -06	BK	8/15/14
03	-	ADDED NEW TABULATION -05	BK	6/6/14
03	408	ADDED NEW TABULATIONS -03 & -04	TDR	4/3/13
02	07-026	UPDATED ITEMS 4 & 30, REMOVED O-RING KIT NOTE AND ADDED BEARING PART NUMBERS NOTE. ALSO REFERENCED MOTOR OPTION SPEC.	FTM	09/11/2007
01	04-063	CHANGE TO ALL SPLINE SHAFT	RAC	09/01/2004
REV.	ECN NO.	DESCRIPTION	BY	DATE

UNLESS OTHERWISE SPECIFIED:

Production

1717 Doolittle Drive
San Leandro CA 94577
energyrecovery.com
P 510.483.7370
F 510.483.7371

energy recovery

ASSY, PUMP, BOOSTER, HP-8504

SIZE DWG. NO. **50001** REV **06**

WEIGHT: SCALE: 1:1 SHEET 1 OF 3

THIRD ANGLE PROJECTION

OPERATION & MAINTANCE MANUAL ERI P/N 80020-01
MECHANICAL SEAL KIT, ERI P/N 20004-01
HP-8504, 3-STAGE REBUILD KIT, ERI P/N 20006-01
BOOSTER PUMP TOOL KIT, ERI P/N 20003-01
THRUST BEARING 7.5-10 H.P., ERI P/N 10509-02, 10509-02
BACK BEARING 7.5-10 H.P., ERI P/N 10510-01, 10510-01

PROPRIETARY

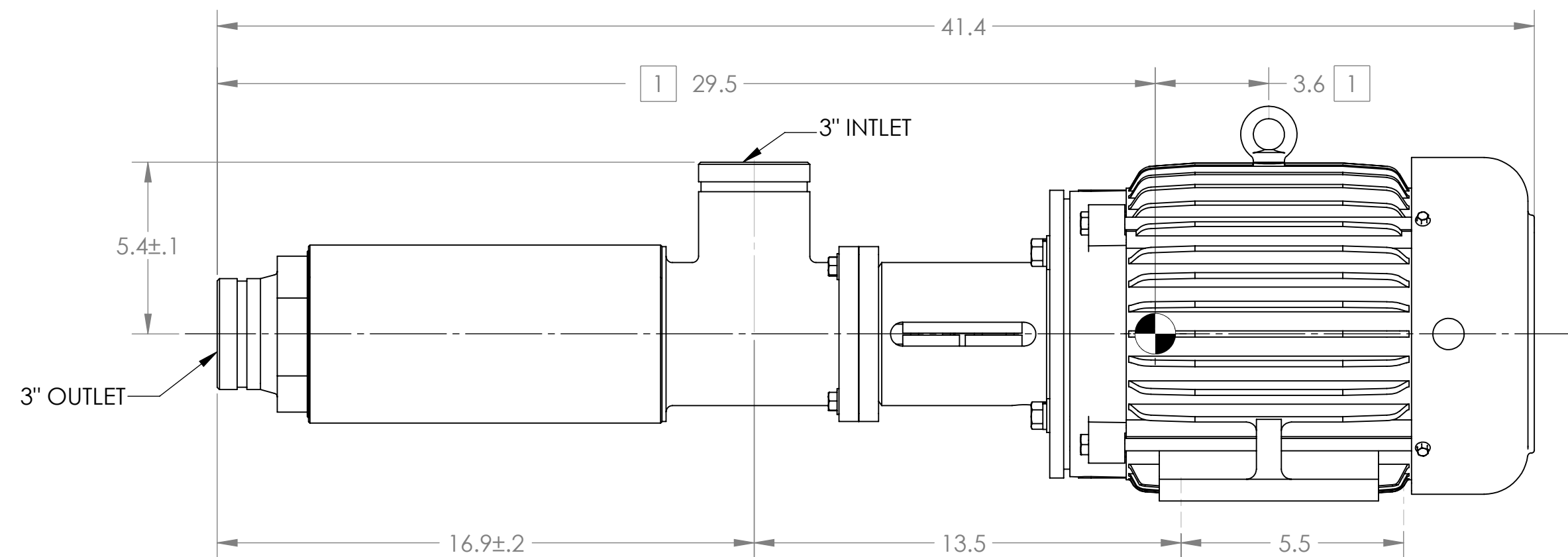
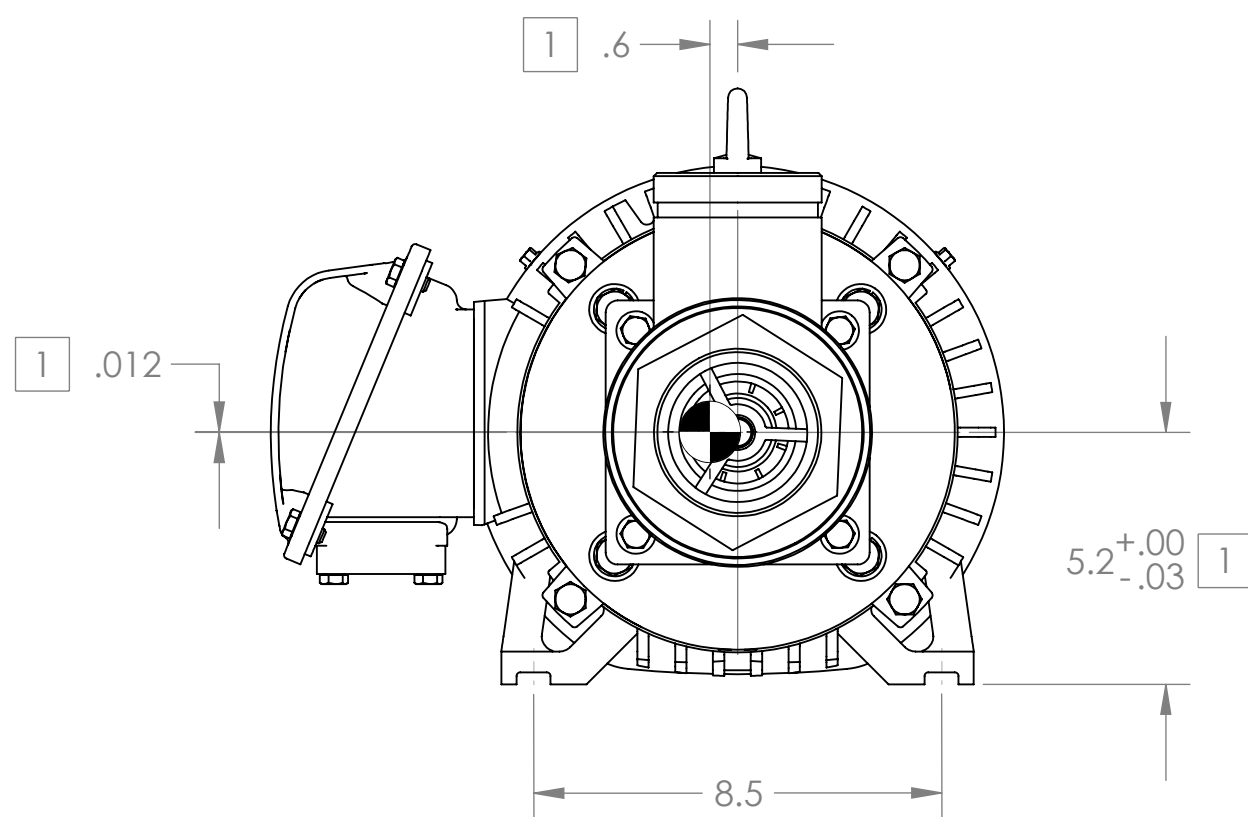
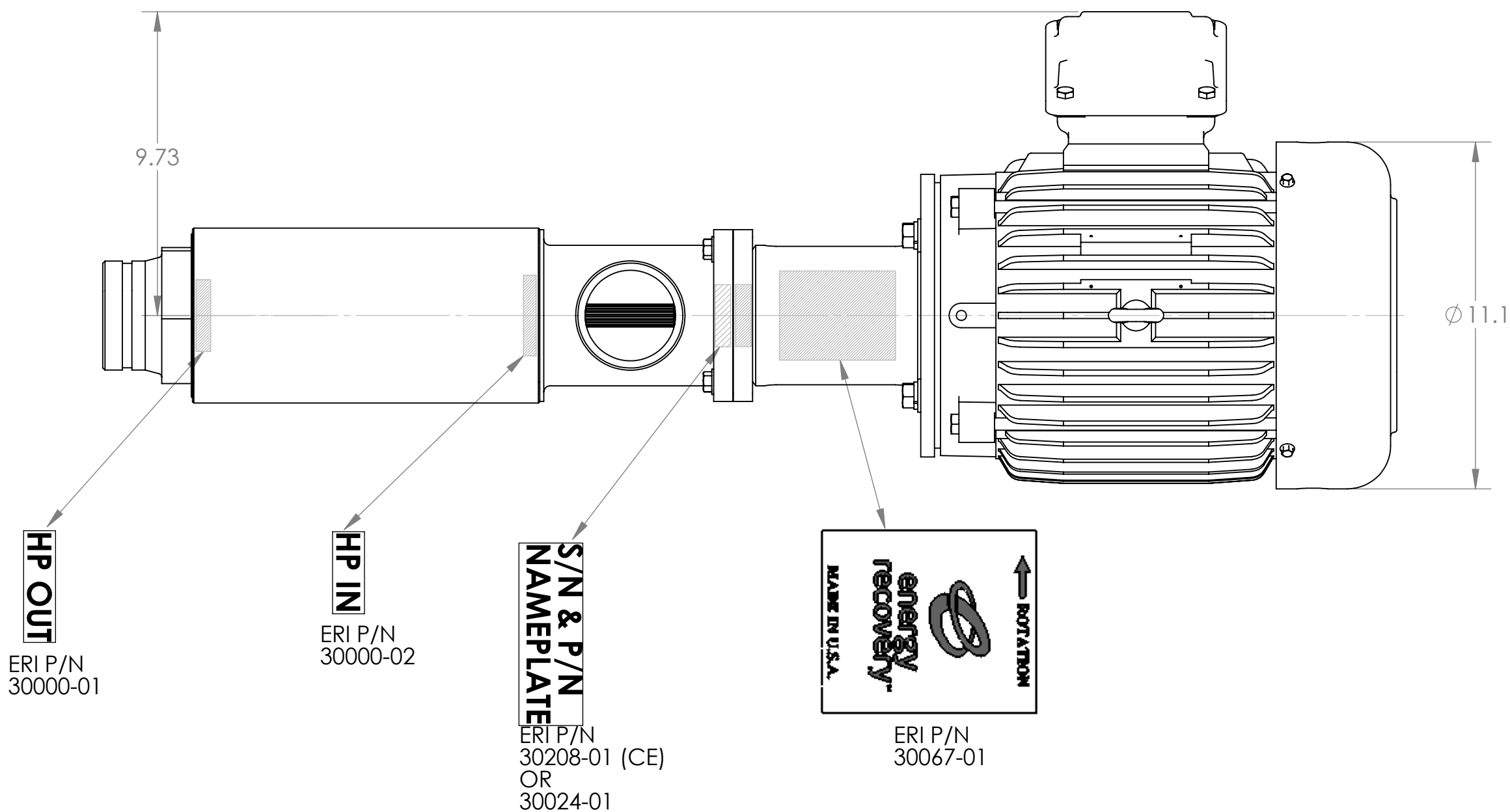
THE INFORMATION CONTAINED IN THIS DRAWING IS THE SOLE PROPERTY OF ENERGY RECOVERY INC. ANY REPRODUCTION IN PART OR AS A WHOLE WITHOUT THE WRITTEN PERMISSION OF ENERGY RECOVERY INC. IS PROHIBITED.

DIMENSIONING AND TOLERANCING PER ANSI Y14.5M (LATEST)

© ENERGY RECOVERY INC


NOTES, UNLESS OTHERWISE SPECIFIED:

- 1. CENTER OF MASS DIMENSIONS FOR ASSEMBLY ARE FOR REFERENCE ONLY
- 2. MOTORS ARE CUSTOMIZED TO EMPLOY A SPECIAL THRUST BEARING. CONTACT ENERGY RECOVERY INC. FOR REPLACEMENT OR REPAIR.
- 3. ENERGY RECOVERY INC. RESERVES TO RIGHT TO MAKE SPECIFICATION OR DIMENSION CHANGES WITHOUT NOTICE.
- 4. LABEL LOCATIONS ARE APPROX AS SHOWN.



OVERALL DIMENSIONS LABEL LOCATIONS

1717 Doolittle Drive
 San Leandro CA 94577
 energyrecovery.com
 P 510.483.7370
 F 510.483.7371

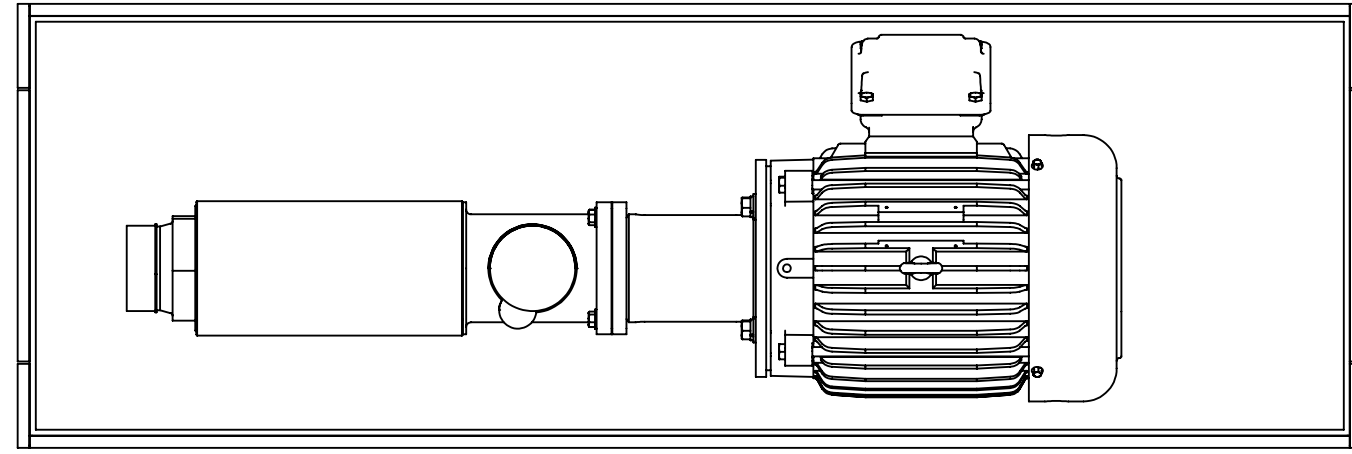


energy recovery™

TITLE: ASSY, PUMP, BOOSTER, HP-8504

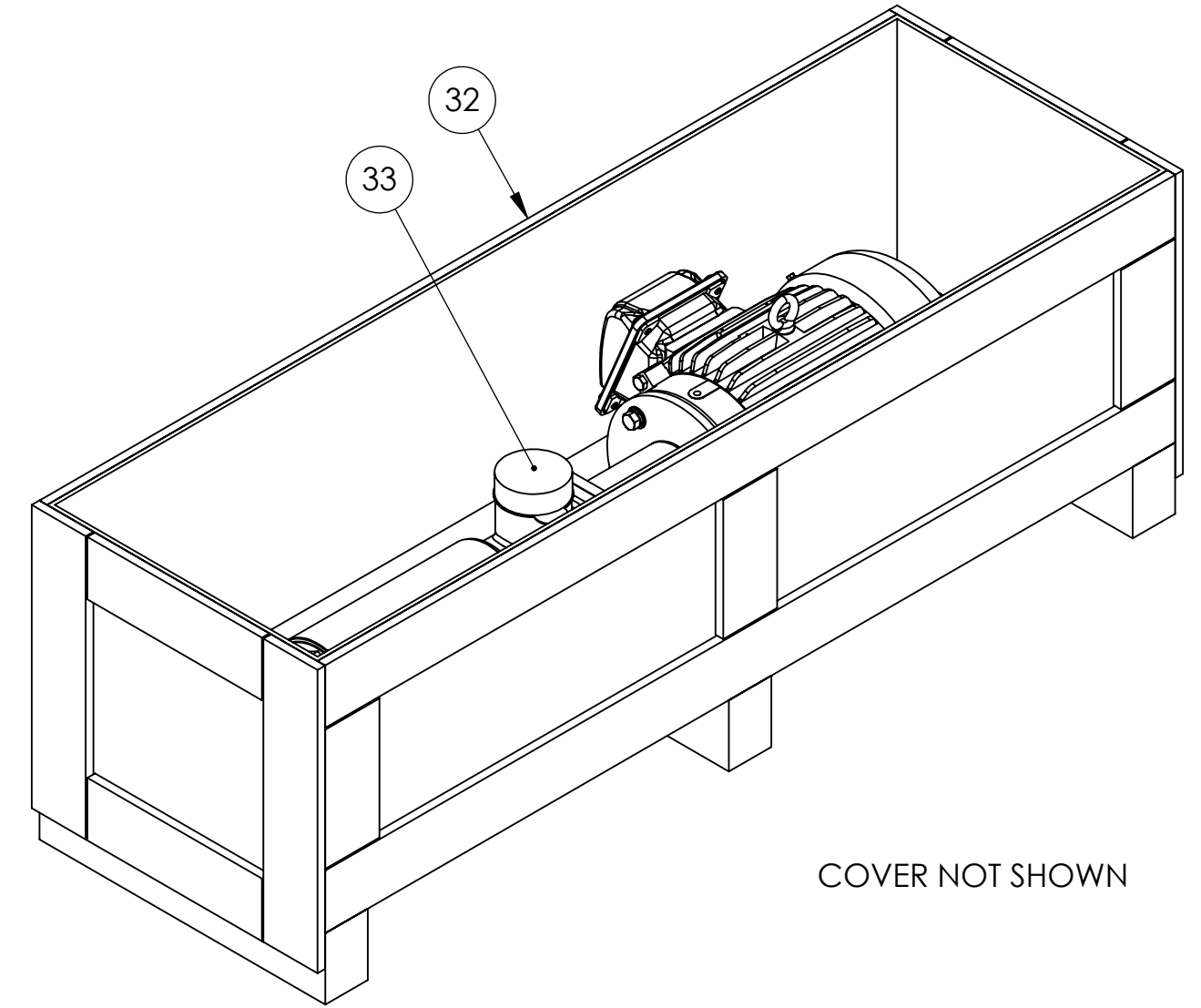
SIZE	DWG. NO.	REV
C	50001	06
WEIGHT:	SCALE: 1:1	SHEET 2 OF 3

BILL OF MATERIALS				
ITEM NO.	QTY	50001-01	DESCRIPTION	MATERIAL
32	1	10010-01	CRATE, SHIPPING, PUMP, WOOD	Wood
33	2	10011-01	CAP-PLUG, SHIPPING, MALE, 3"DIA, PLASTIC	PLASTIC

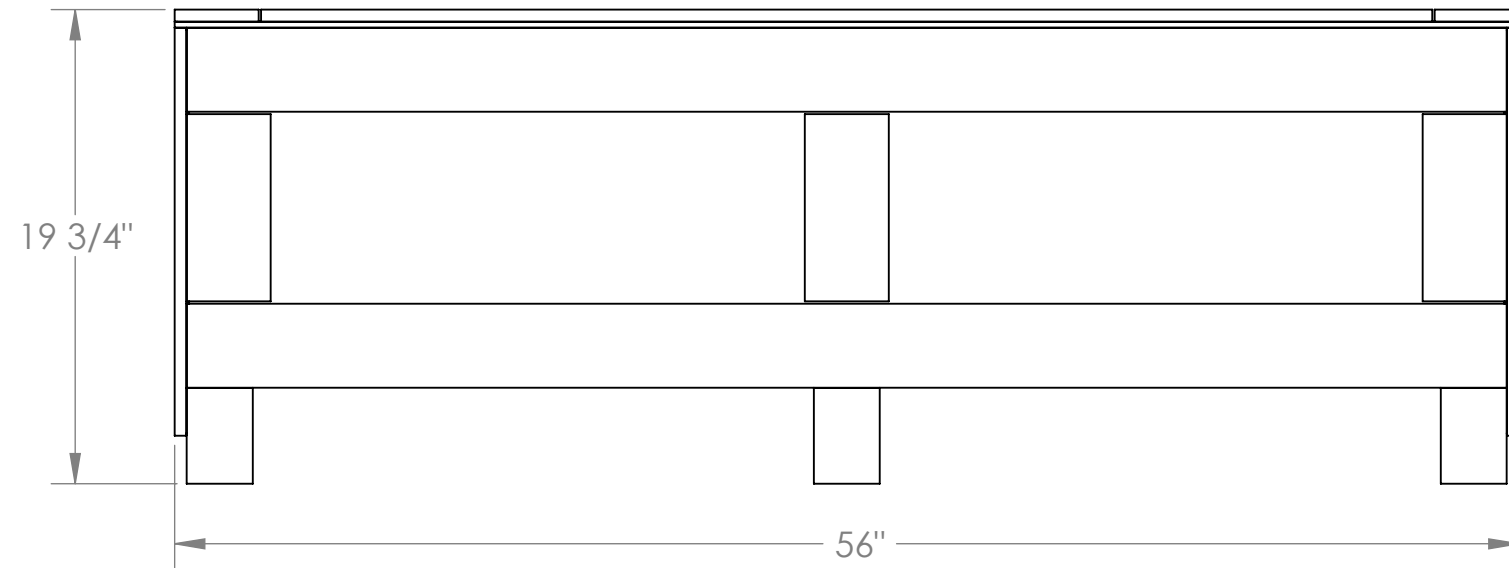
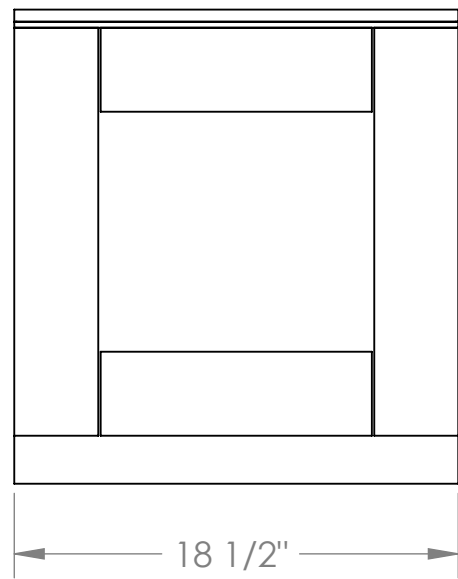


COVER NOT SHOWN

ATTACH BOOSTER PUMP ASSEMBLY TO BOTTOM OF CRATE USING HEX BOLT/WASHER SHORE PUMP TO KEEP FROM SHIFTING OR MOVEMENT INSIDE CRATE DURING TRANSIT



COVER NOT SHOWN



SHIPPING WEIGHT: 300 LBS / 136 Kgs

1717 Doolittle Drive
 San Leandro CA 94577
energyrecovery.com
 P 510.483.7370
 F 510.483.7371



TITLE:
ASSY, PUMP, BOOSTER, HP-8504

SIZE C	DWG. NO. 50001	REV 06
------------------	--------------------------	------------------

WEIGHT:	SCALE: 1:8	SHEET 3 OF 3
---------	------------	--------------