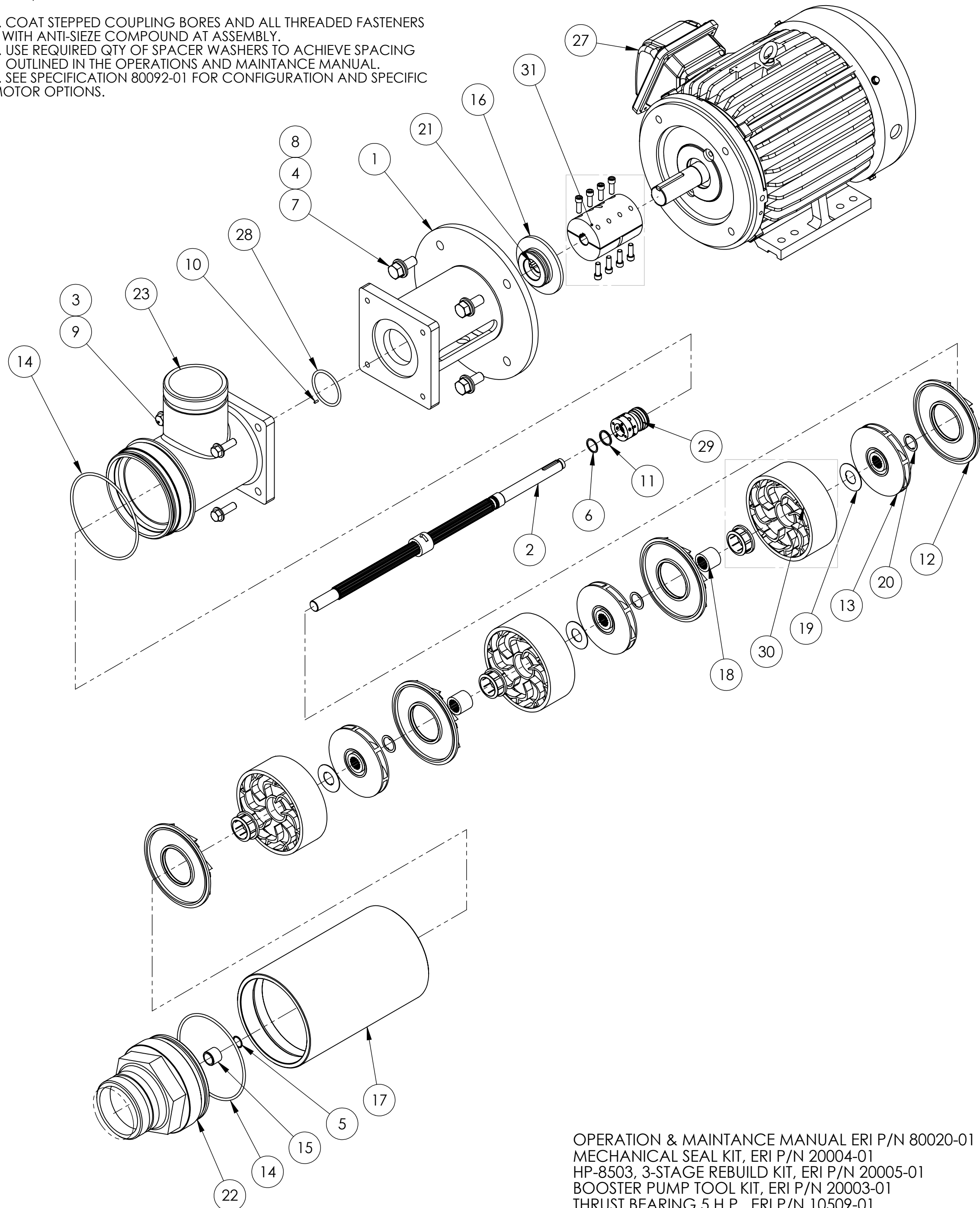


NOTES, UNLESS OTHERWISE SPECIFIED:

1. COAT STEPPED COUPLING BORES AND ALL THREADED FASTENERS WITH ANTI-SIEZE COMPOUND AT ASSEMBLY.
2. USE REQUIRED QTY OF SPACER WASHERS TO ACHIEVE SPACING OUTLINED IN THE OPERATIONS AND MAINTANCE MANUAL.
3. SEE SPECIFICATION 80092-01 FOR CONFIGURATION AND SPECIFIC MOTOR OPTIONS.



OPERATION & MAINTANCE MANUAL ERI P/N 80020-01
 MECHANICAL SEAL KIT, ERI P/N 20004-01
 HP-8503, 3-STAGE REBUILD KIT, ERI P/N 20005-01
 BOOSTER PUMP TOOL KIT, ERI P/N 20003-01
 THRUST BEARING 5 H.P., ERI P/N 10509-01
 BACK BEARING 5 H.P., ERI P/N 10510-01

ITEM NO.	QTY.	PART NUMBER	DESCRIPTION	MATERIAL
1	1	51000-01	ADAPTER, MOTOR, FINISHED, HP-PUMP, ALUMINIUM	ALUM
2	1	51052-01	SHAFT, HP-8503, ASSY, ALL-SPLINE, AL6XN	AL6XN
3	4	10038-01	WASHER, FLAT, 3/8" ID, 316	316 SS
4	4	10044-01	WASHER, LOCK, 1/2" ID, 316	316 SS
5	1	10061-01	RING, RETAINING, SHAFT, .625", 276	C276
6	1	10066-01	RING, RETAINING, SHAFT, .750", 276	C276
7	4	10067-01	SCREW, HEX-HEAD, 1/2"-13, X 1.25", 316	316 SS
8	4	10068-01	WASHER, FLAT, 1/2" ID, .875" OD, 18-8	18-8 SS
9	4	10070-01	SCREW, HEX-HEAD, 3/8"-16, X 1.25", 316	316 SS
10	1	10117-01	DOWEL, PIN, 3/32" DIA, X 1/4", NSF, ACE	ACETAL
11	1	10122-01	SPACER, 0875" OD, .75" ID, X .06", PVC	PVC
12	4	10142-01	DIFFUSER, PLATE, PUMP, 8000, NORYL	NORYL
13	3	10145-01	IMPELLER, PUMP, 8000, NORYL	NORYL
14	2	10163-01	O-RING, EPDM, 249	EPDM
15	1	51003-01	BUSHING, SLEEVE, HP-PUMP, RULON	RULON
16	1	51008-01	PLATE, SEAL, HP-PUMP, AL6XN	AL6XN
17	1	51011-01	SHELL, HP-8503, HP-PUMP, AL6XN	AL6XN
18	3	51025-01	BEARING, JOURNAL, HP-PUMP, AL6XN	AL6XN
19	3	51026-01	WASHER, THRUST, HP-PUMP, AL6XN	AL6XN
20	6	51027-01	WASHER, SPACER, HP-PUMP, AL6XN	AL6XN
21	1	51041-01	KEY, CUT, 3/16" SQ, X 1.00", SHAFT, HP-PUMP, 316	316 SS
22	1	51064-01	END-CAP, FINISHED, IC, HP-PUMP, AL6XN	AL6XN
23	1	51066-01	HOUSING, SUCTION, IC, HP-PUMP, AL6XN	AL6XN
24	2	51218-01	HOUSING GUARD (CE ONLY, NOT SHOWN)	VINYL
25	1	30208-01	TAG, HP-PUMP, CE CERTIFICATION (CE ONLY, NOT SHOWN)	ALUM
26	1	30024-01	LABEL, SERIAL NUMBER	ALUM
27	1	51229-01	MOTOR, 5HP, 380V/50HZ, 460V/60HZ, 184TC, B34R, TECO	-
28	1	10160-01	O-RING, EPDM, 225	EPDM
29	1	10123-01	SEAL, MECHANICAL, SHAFT, 316	316SS
30	3	10138-01	DIFFUSER, BOWL, PUMP, 8000, NORYL	NORYL
31	1	51028-01	COUPLING, SHAFT, RIGID, STEPPED, 5/8" X 1-1/8", HP-PUMP, TIT	TITANIUM

REV.	ECN NO.	DESCRIPTION	BY	DATE
06	0749	REMOVED SCREWS OF COUPLING, BUSHING OUT OF BOM	KT	6/10/22
05	-	MOVED MOTOR CONFIG. TABLE TO SHEET 2 AND UPDATED THE TABLE	YR	03/01/22
-	0742	QTY. FOR ITEM P/N: 51218-01 CHANGED FROM 1 TO 2	AL	10/06/21
05	0732	UPDATED 30205-01 CE TAG TO 30208-01; ADDED NOTE 1 & DIMS OF CENTER OF MASS ON SHEET 2	YR	05/12/21
04	0722	MADE CHANGES TO THE OAL DUE TO NEW MOTORS, ADDED CONFIGURATION TABLE, MADE CHANGES TO BEARING P/N	SD	5/4/2021
03	-	CREATED NEW MOTOR OPTION -12 & -13	AKP	2/6/18
03	-	CREATED NEW MOTOR OPTION -10, REMOVED DUPLICATE BUBBLES	BK	11/2/15
03	-	CREATED NEW MOTOR OPTION MATRIX & ADDED -09	BK	5/15/15
03	0566	CREATED NEW MOTOR OPTION MATRIX & ADDED -08; CORRECTED CE	BK	4/3/14
03	0553	CREATED NEW MOTOR OPTION MATRIX & ADDED -07	BK	2/14/14
03	0490	CREATED NEW MOTOR OPTION MATRIX & ADDED -05 & -06	TDR	10/4/13
03	0408	ADDED NEW TABULATIONS -03 & -04	TDR	4/3/13
02	07-026	UPDATED ITEMS 4 & 30, REMOVED O-RING KIT NOTE AND ADDED BEARING PART NUMBERS NOTE. REFERENCED MOTOR OPTION SPEC.	FTM	09/11/07
01	04-062	CHANGE TO ALL SPLINE SHAFT	RAC	09/01/04

UNLESS OTHERWISE SPECIFIED:

Production

1717 Doolittle Drive
 San Leandro CA 94577
energyrecovery.com
 P 510.483.7370
 F 510.483.7371

energy recovery™

TOLERANCES:
 FRACTIONAL: ± 1/32"
 ANGULAR: MACH ± .5° BEND ± 1°
 TWO PLACE DECIMAL: ± .01"
 THREE PLACE DECIMAL: ± .005"
 FOUR PLACE DECIMAL: ± .0002"

DRAWING STATUS

DRAWN	RAC	05/12/2003
CHECKED	TLS	05/28/2003
ENG APPR.	RLS	05/28/2003

TITLE:
ASSY, PUMP, BOOSTER, HP-8503

SIZE: **C** **DWG. NO.:** **50000** **REV:** **06**

WEIGHT: **SCALE:** 1:4.5 **SHEET 1 OF 4**

THIRD ANGLE PROJECTION

PROPRIETARY

THE INFORMATION CONTAINED IN THIS DRAWING IS THE SOLE PROPERTY OF ENERGY RECOVERY INC. ANY REPRODUCTION IN PART OR AS A WHOLE WITHOUT THE WRITTEN PERMISSION OF ENERGY RECOVERY INC. IS PROHIBITED.

DIMENSIONING AND TOLERANCING PER ANSI Y14.5M (LATEST)

MOTOR CONFIGURATION

TOP LEVEL ASSEMBLIES	50000-01	50000-02	50000-31	50000-32	50000-05
MOTOR CONFIG.:	460V/60HZ	380V/50HZ	460V/60HZ	380V/50HZ	380V/60HZ
MOTOR P/N:	51229-01	51229-01	51229-31	51229-31	51229-05
STANDARD MOTOR - DUAL VOLTAGE - 460V/60HZ, 380V/50HZ	X	X			
STANDARD MOTOR - DUAL VOLTAGE - 460V/60HZ, 380V/50HZ - CE CERT			X	X	
CUSTOMIZED MOTOR - VOLTAGE - 380V/60 HZ					X

1717 Doolittle Drive
San Leandro CA 94577
energyrecovery.com
P 510.483.7370
F 510.483.7371



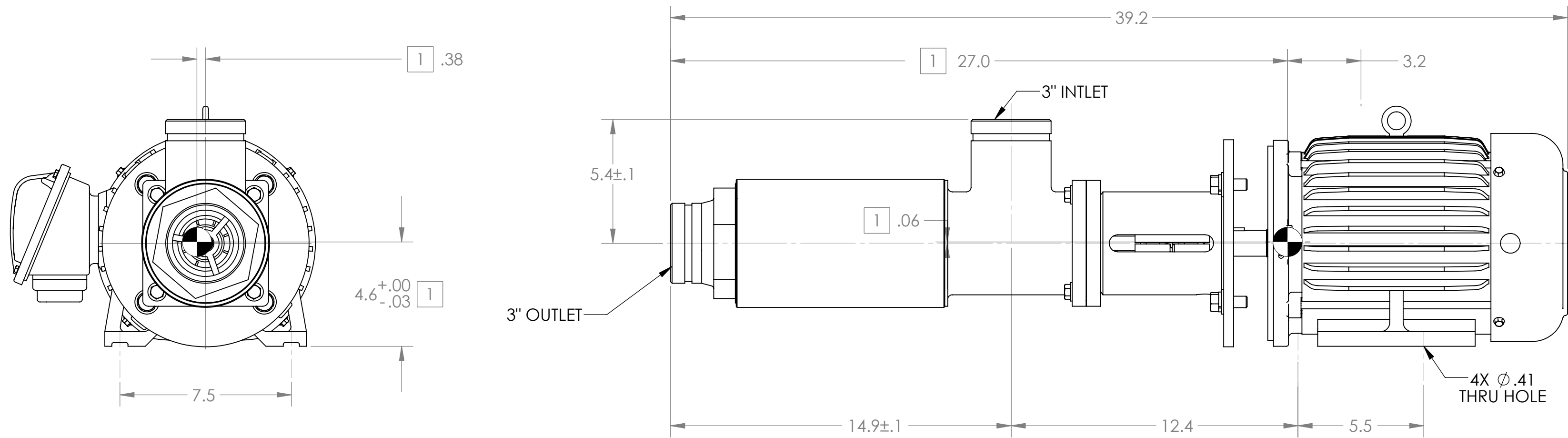
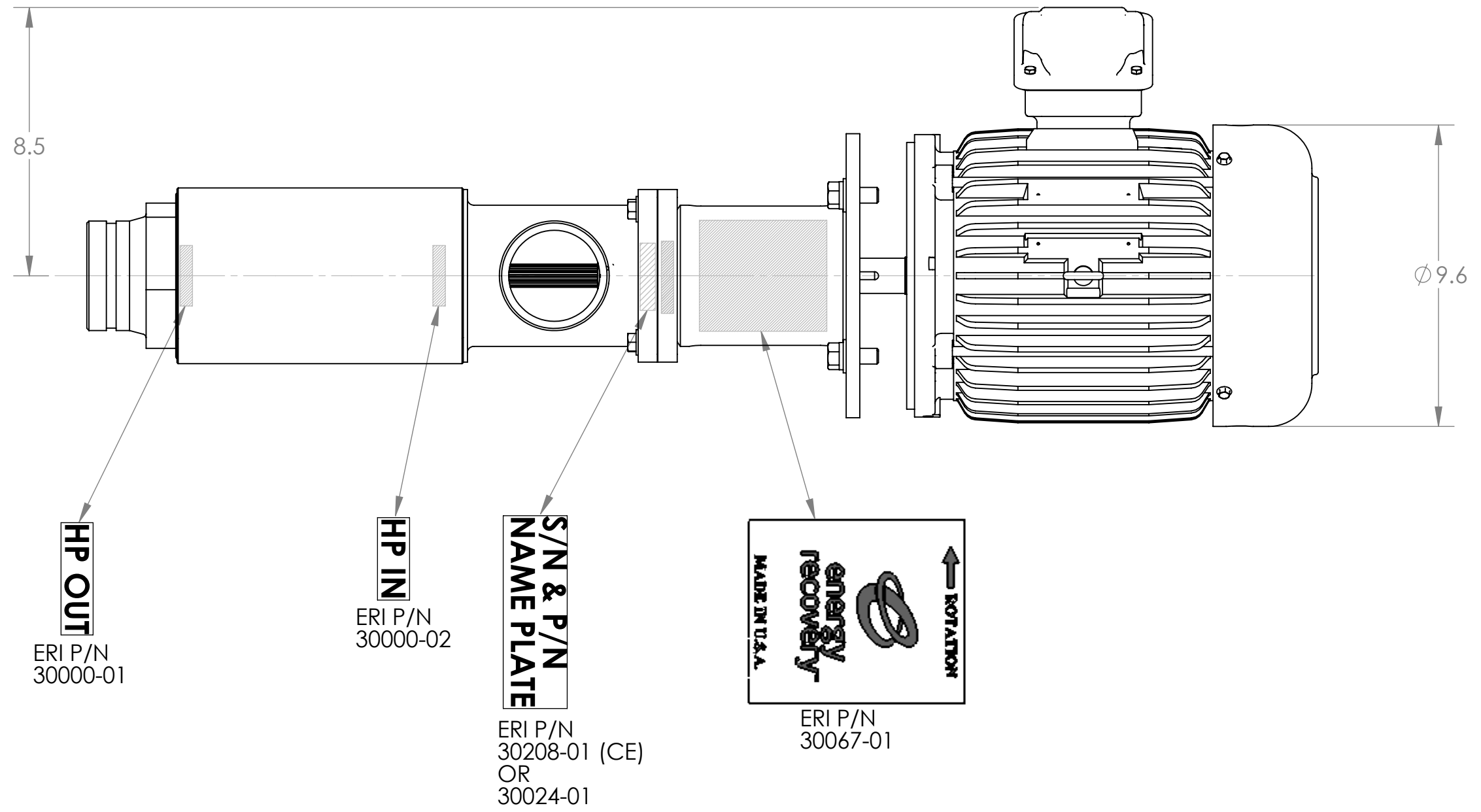
TITLE:
ASSY, PUMP, BOOSTER, HP-8503

SIZE C	DWG. NO. 50000	REV 06
------------------	--------------------------	------------------

WEIGHT:	SCALE: 1:1	SHEET 2 OF 4
---------	------------	--------------

NOTES, UNLESS OTHERWISE SPECIFIED:

1. CENTER OF MASS DIMENSIONS FOR ASSEMBLY ARE FOR REFERENCE ONLY.
2. MOTORS ARE CUSTOMIZED TO EMPLOY A SPECIAL THRUST BEARING. CONTACT ENERGY RECOVERY INC. FOR REPLACEMENT OR REPAIR.
3. MOTOR = 5 H.P. 184T FRAME
4. LABEL LOCATIONS ARE APPROX AS SHOWN.



**OVERALL DIMENSIONS
LABEL LOCATIONS**

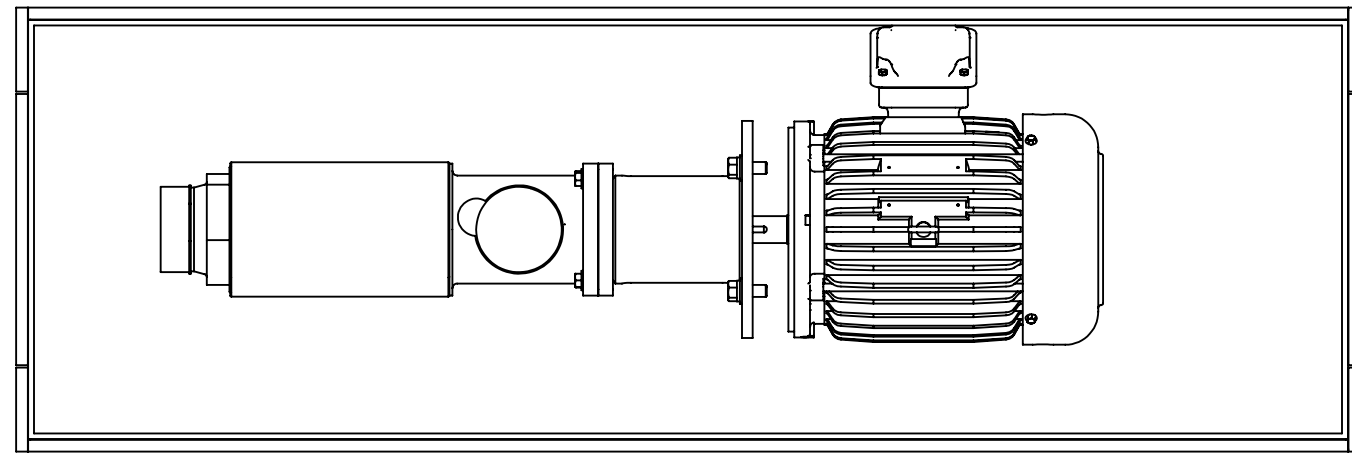
1717 Doolittle Drive
San Leandro CA 94577
energyrecovery.com
P 510.483.7370
F 510.483.7371



TITLE:
ASSY, PUMP, BOOSTER, HP-8503

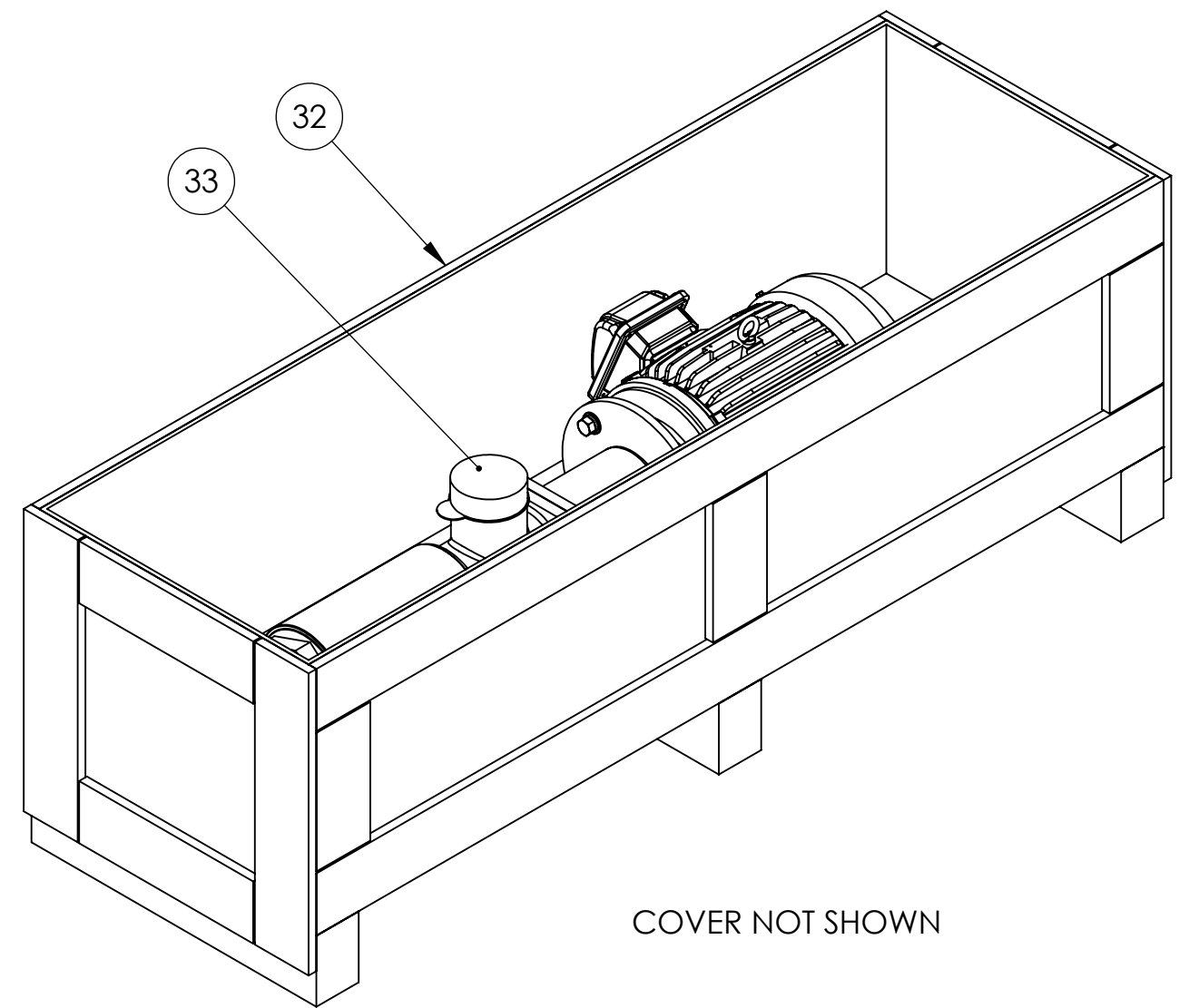
SIZE C	DWG. NO. 50000	REV 06
WEIGHT:	SCALE: 1:1	SHEET 3 OF 4

ITEM NO.	QTY.	PART NUMBER	DESCRIPTION	MATERIAL
32	1	10010-01	CRATE, SHIPPING, PUMP, WOOD	Wood
33	2	10011-01	CAP-PLUG, SHIPPING, MALE, 3"DIA, PLA	PLASTIC

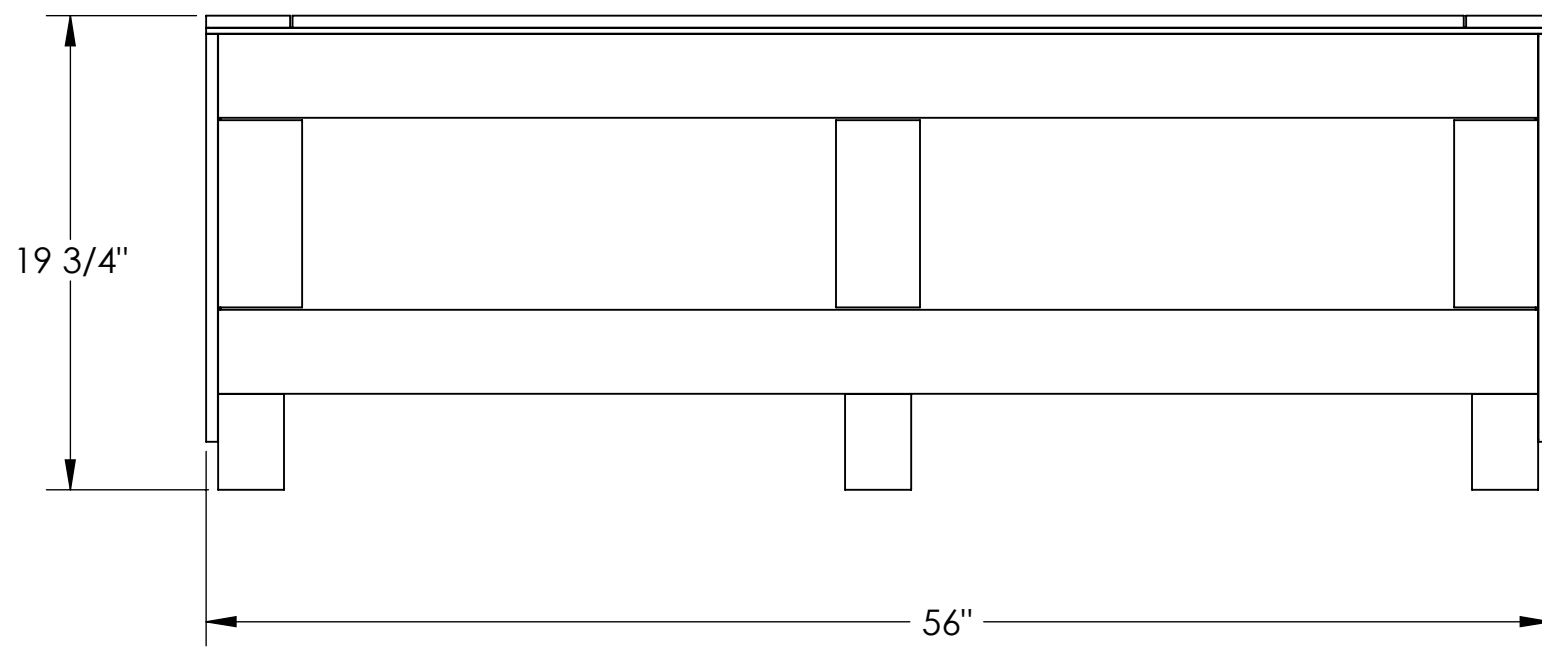
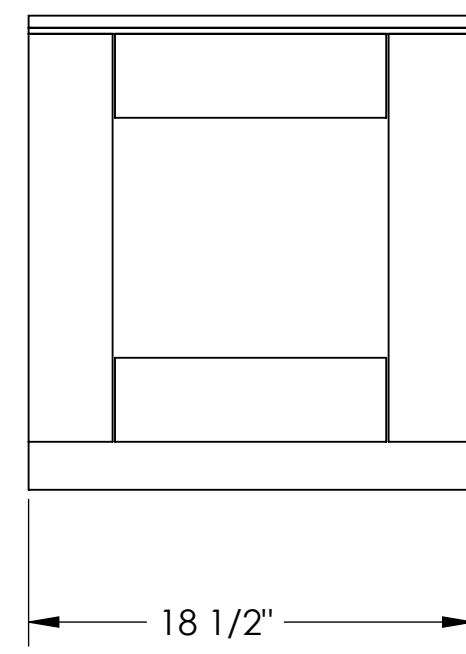


COVER NOT SHOWN

ATTACH BOOSTER PUMP ASSEMBLY TO BOTTOM OF CRATE USING HEX BOLT/WASHER SHORE PUMP TO KEEP FROM SHIFTING OR MOVEMENT INSIDE CRATE DURING TRANSIT




COVER NOT SHOWN



SHIPPING WEIGHT: 280 LBS / 127 Kgs

1717 Doolittle Drive
 San Leandro CA 94577
energyrecovery.com
 P 510.483.7370
 F 510.483.7371



energy recovery™

TITLE:
ASSY, PUMP, BOOSTER, HP-8503

SIZE C	DWG. NO. 50000	REV 06
WEIGHT:	SCALE: 1:8	SHEET 4 OF 4