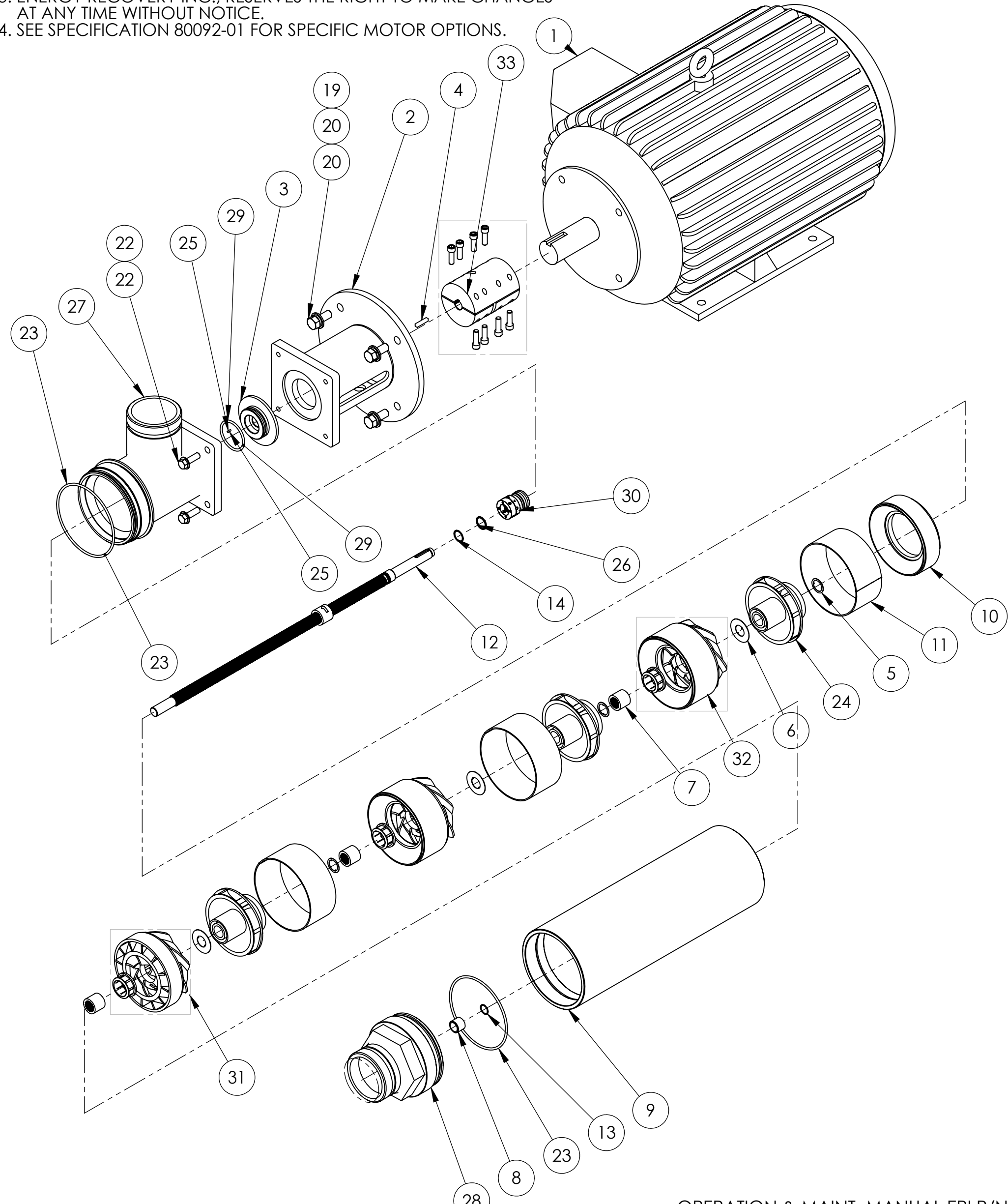


NOTES, UNLESS OTHERWISE SPECIFIED:

1. COAT STEPPED COUPLING BORES AND ALL THREADED FASTENERS WITH ANTI-SIEZE COMPOUND AT ASSEMBLY.
2. USE REQUIRED QTY OF SPACER WASHERS TO ACHIEVE SPACING OUTLINED IN THE OPERATIONS AND MAINTANCE MANUAL.
3. ENERGY RECOVERY INC., RESERVES THE RIGHT TO MAKE CHANGES AT ANY TIME WITHOUT NOTICE.
4. SEE SPECIFICATION 80092-01 FOR SPECIFIC MOTOR OPTIONS.



OPERATION & MAINT. MANUAL ERI P/N 80020-01  
 MECHANICAL SEAL KIT, ERI P/N 20004-01  
 HP-2403, 3-STAGE REBUILD KIT, ERI P/N 20010-01  
 BOOSTER PUMP TOOL KIT, ERI P/N 20003-01  
 THRUST BEARING15-20 H.P., ERI P/N 10509-03, 10509-03  
 BACK BEARING15-20 H.P., ERI P/N 10510-04, 10510-04

**PROPRIETARY**  
 THE INFORMATION CONTAINED IN THIS DRAWING IS THE SOLE PROPERTY OF ENERGY RECOVERY INC. ANY REPRODUCTION IN PART OR AS A WHOLE WITHOUT THE WRITTEN PERMISSION OF ENERGY RECOVERY INC. IS PROHIBITED.

© ENERGY RECOVERY INC

BILL OF MATERIALS

ITEM NO.	QTY.	PART NUMBER	DESCRIPTION	MATERIAL
1	1	51233-XX	MOTOR, 20HP, 460v, 60HZ, 256T, B34R, LEESON	
2	1	51000-01	ADAPTER, MOTOR, FINISHED, HP-PUMP, ALUMINIUM	ALUM
3	1	51008-01	PLATE, SEAL, HP-PUMP, AL6XN	AL6XN
4	1	51041-01	KEY, CUT, 3/16" SQ. X 1.00", SHAFT, HP-PUMP, 316	316 SS
5	6	51027-01	WASHER, SPACER, HP-PUMP, AL6XN	AL6XN
6	3	51026-01	WASHER, THRUST, HP-PUMP, AL6XN	AL6XN
7	3	51025-01	BEARING, JOURNAL, HP-PUMP, AL6XN	AL6XN
8	1	51003-01	BUSHING, SLEEVE, HP-PUMP, RULON	RULON
9	1	51011-06	SHELL, HP-2403, HP-PUMP, AL6XN	AL6XN
10	1	51033-01	DIFFUSER, INLET, HP-PUMP, 2400	PVC
11	3	51031-01	SLEEVE, IMPELLER, HP-2400, HP-PUMP, AL6XN	AL6XN
12	1	51050-01	SHAFT, HP-1253, ASSY, ALL-SPLINE, AL6XN	AL6XN
13	1	10061-01	RING, RETAINING, SHAFT, .625", 276	C276
14	1	10066-01	RING, RETAINING, SHAFT, .750", 276	C276
15	2	51218-01	HOUSING GUARD (CE ONLY, NOT SHOWN)	VINYL
16	1	30208-01	TAG, HP-PUMP, CE CERTIFICATION (CE ONLY, NOT SHOWN)	ALUM
17	1	30024-01	LABEL, SERIAL NUMBER	ALUM
18	4	10068-01	WASHER, FLAT, 1/2" ID, .875" OD, 18-8	18-8 SS
19	4	10044-01	WASHER, LOCK, 1/2" ID, 316	316 SS
20	4	10067-01	SCREW, HEX-HEAD, 1/2"-13, X 1.25", 316	316 SS
21	4	10038-01	WASHER, FLAT, 3/8" ID, 316	316 SS
22	4	10070-01	SCREW, HEX-HEAD, 3/8"-16, X 1.25", 316	316 SS
23	2	10163-01	O-RING, EPDM, 249	EPDM
24	3	10148-01	IMPELLER, PUMP, 2400, NORYL	NORYL
25	1	10117-01	DOWEL, PIN, 3/32" DIA, X 1/4", NSF, ACE	ACETAL
26	1	10122-01	SPACER, .0875" OD, .75" ID, X .06", PVC	PVC
27	1	51066-01	HOUSING, SUCTION, IC, HP-PUMP, AL6XN	AL6XN
28	1	51064-01	END-CAP, FINISHED, IC, HP-PUMP, AL6XN	AL6XN
29	1	10160-01	O-RING, EPDM, 225	EPDM
30	1	10123-01	SEAL, MECHANICAL, SHAFT, 316	316SS
31	1	10144-01	DIFFUSER, PLATE, PUMP, 2400, NORYL	NORYL
32	2	10140-01	DIFFUSER, BOWL, PUMP, 2400, NORYL	NORYL
33	1	51030-01	COUPLING, SHAFT, RIGID, STEPPED, 5/8" X 1-5/8", HP-PUMP, TITANIUM	TITANIUM

REV.	ECN NO.	DESCRIPTION	BY	DATE
06	0749	REMOVED SCREWS OF COUPLING, BSHING OF DIFFUSER OUT OF BOM	KT	6/10/22
-	-	MOTOR CONFIGURATION UPDATED AND MOVED TO PAGE 2	YR	10/26/21
-	0742	QTY. FOR ITEM P/N: 51218-01 CHANGED FROM 1 TO 2.	AL	10/05/21
05	0732	UPDATED 30205-01 CE TAG TO 30208-0; ADDED NOTE 1 & DIMS OF CENTER OF MASS ON SHEET 2	YR	05/13/21
04	0722	MADE CHANGES TO THE QAL DUE TO NEW MOTORS, ADDED CONFIGURATION TABLE, MADE CHANGES TO BEARING P/N	SD	5/4/2021
03	0648	CHANGED MOTOR PN'S IN BOM FOR -.05, -.06, -.08 CONFIGURATIONS	MDK	2/29/16
03	-	ADDED NEW TABULATION -11	BK	2/1/16
03	-	ADDED NEW TABULATION -09	BK	9/8/15
3	-	ADDED NEW TABULATION -07, -08	BK	01/28/15
3	0568	CORRECTED BUBBLES 19, 22, 28; ADDED TABULATION -06; CHANGED MOTOR PN IN BOM	BK	04/17/14
3	0546	ADDED NEW TABULATION -05	BK	01/30/14
3	408	ADDED NEW TABULATIONS -03 & -04	TDR	04/04/13

UNLESS OTHERWISE SPECIFIED:  
 DIMENSIONS ARE IN INCHES  
 TOLERANCES:  
 FRACTIONAL: ± 1/32"  
 ANGULAR: MACH ± .5° BEND ± 1°  
 TWO PLACE DECIMAL: ± .01"  
 THREE PLACE DECIMAL: ± .005"  
 FOUR PLACE DECIMAL: ± .0002"

DRAWING STATUS		
DRAWN	RAC	05/12/2003
CHECKED	TLS	05/28/2003
ENG APPR.	RLS	05/28/2003

1717 Doolittle Drive  
 San Leandro CA 94577  
**energyrecovery.com**  
 P 510.483.7370  
 F 510.483.7371

**energy recovery™**

TITLE:  
**ASSY, PUMP, BOOSTER, HP-2403**

DIMENSIONING AND TOLERANCING PER ANSI Y14.5M (LATEST)	SIZE <b>C</b>	DWG. NO. <b>50005</b>	REV <b>06</b>
THIRD ANGLE PROJECTION	WEIGHT:	SCALE: 1:4.5	SHEET 1 OF 4

# MOTOR CONFIGURATION

TOP LEVEL ASSEMBLIES	50005-01	50005-03	50005-31	50005-33	50005-10
MOTOR CONFIG.:	460V/60HZ	380V/50HZ	460V/60HZ	380V/50HZ	690V/60HZ
MOTOR P/N:	51233-01	51233-01	51233-31	51233-31	51233-02
STANDARD MOTOR - DUAL VOLTAGE - 460V/60HZ, 380V/50HZ	X	X			
STANDARD MOTOR - DUAL VOLTAGE - 460V/60HZ, 380V/50HZ - CE CERT			X	X	
MOTOR - VOLTAGE - 20HP, 690V/60HZ					X

1717 Doolittle Drive  
 San Leandro CA 94577  
**energyrecovery.com**  
 P 510.483.7370  
 F 510.483.7371



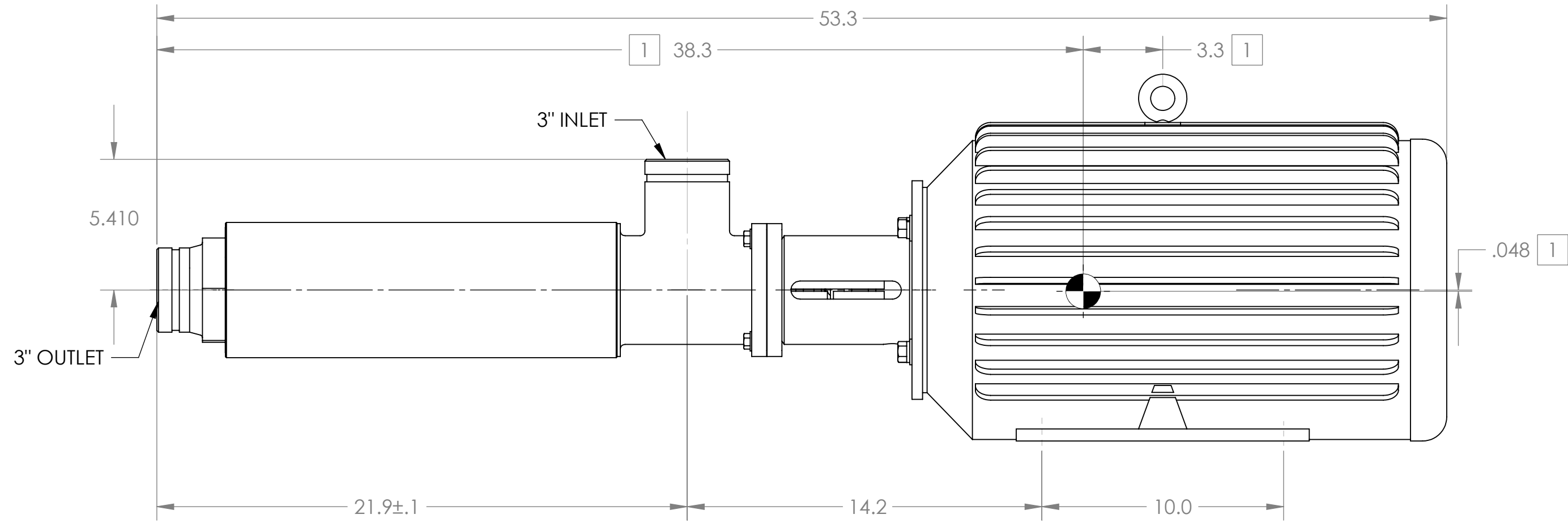
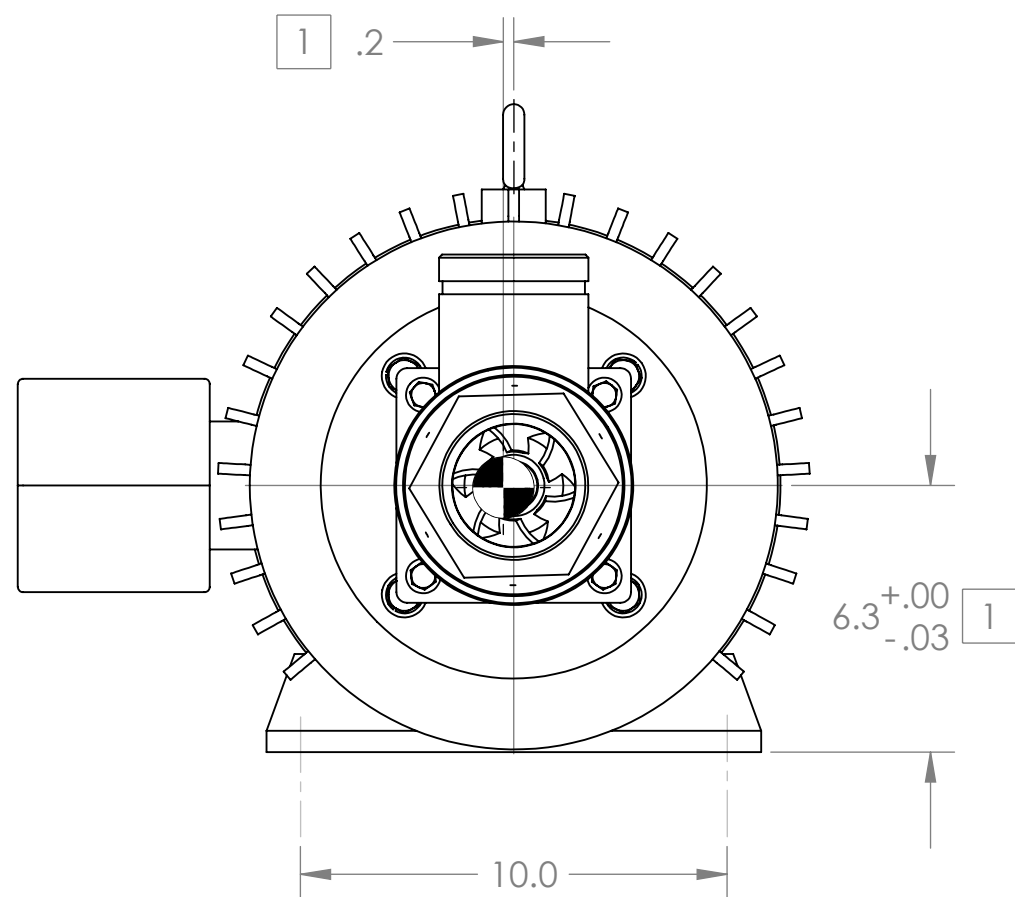
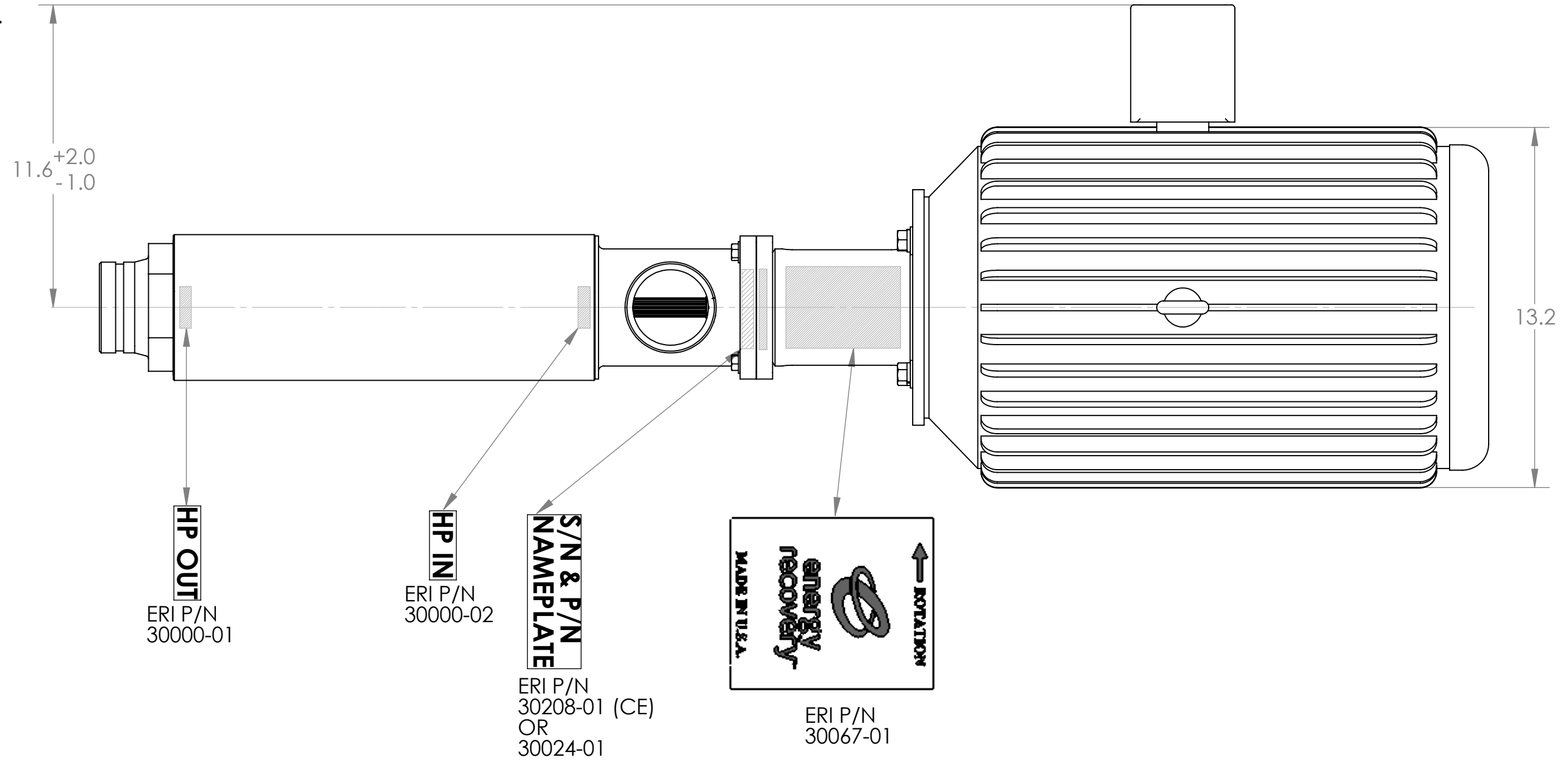
TITLE:  
**ASSY, PUMP, BOOSTER, HP-2403**

SIZE <b>C</b>	DWG. NO. <b>50005</b>	REV <b>06</b>
------------------	--------------------------	------------------

WEIGHT:	SCALE: 1:4.5	SHEET 2 OF 4
---------	--------------	--------------

NOTES, UNLESS OTHERWISE SPECIFIED:

- 1. CENTER OF MASS DIMENSIONS FOR ASSEMBLY ARE FOR REFERENCE ONLY.
- 2. MOTORS ARE CUSTOMIZED TO EMPLOY A SPECIAL THRUST BEARING. CONTACT ENERGY RECOVERY INC. FOR REPLACEMENT OR REPAIR.
- 3. ENERGY RECOVERY INC. RESERVES TO RIGHT TO MAKE SPECIFICATION OR DIMENSION CHANGES WITHOUT NOTICE.
- 4. LABEL LOCATIONS ARE APPROX AS SHOWN.



OVERALL DIMENSIONS LABEL LOCATIONS

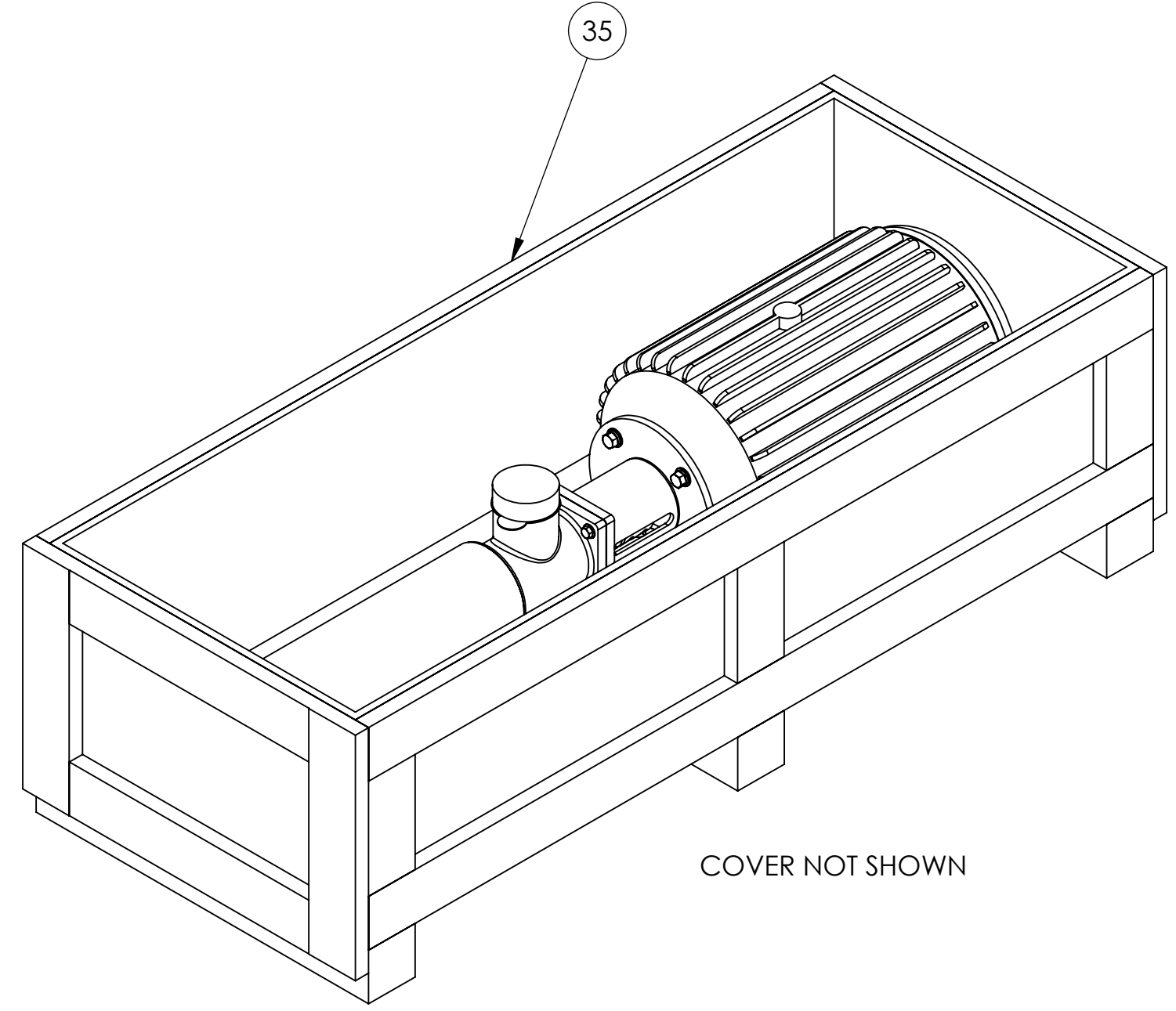
1717 Doolittle Drive  
 San Leandro CA 94577  
 energyrecovery.com  
 P 510.483.7370  
 F 510.483.7371



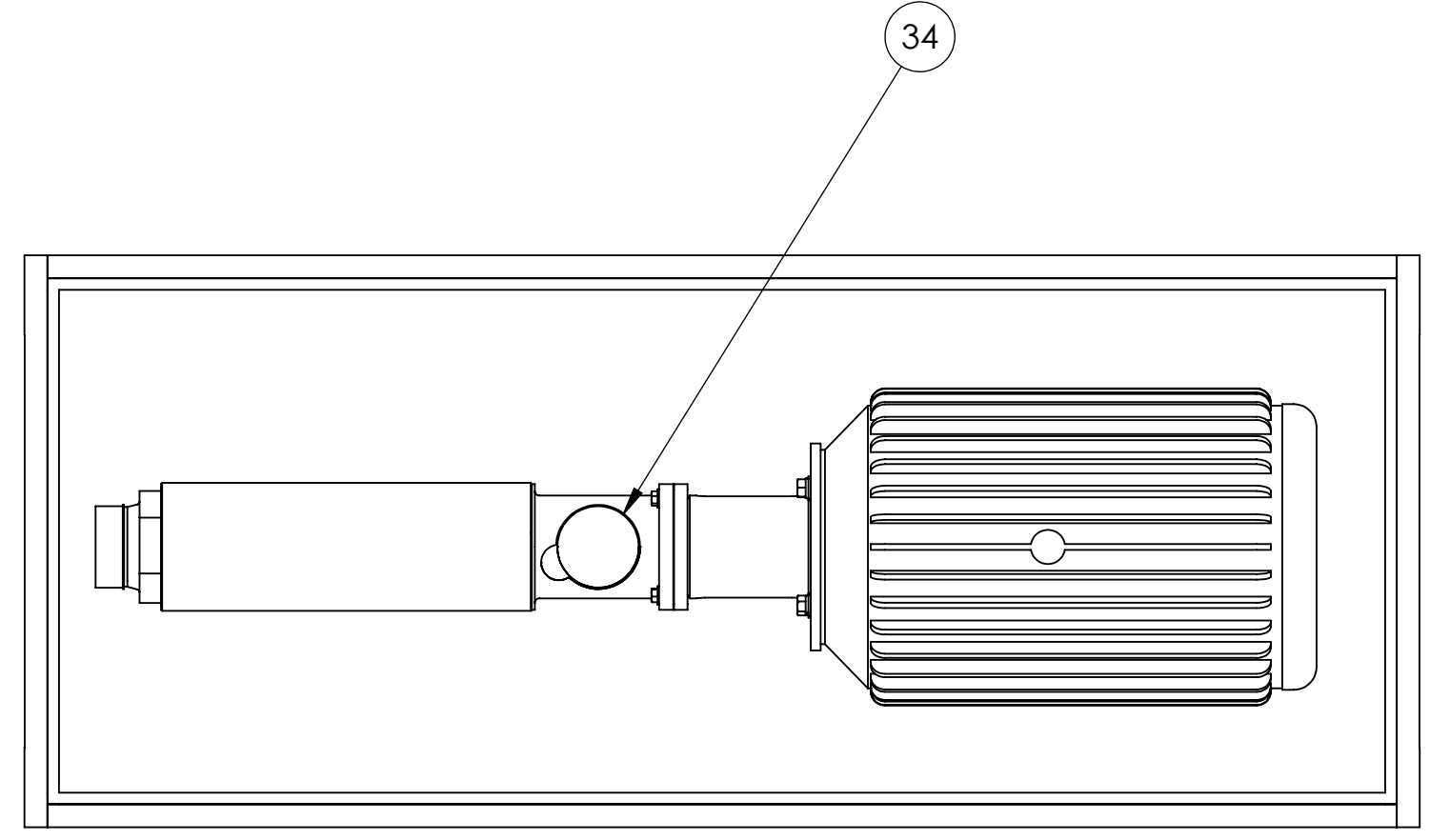
TITLE:  
 ASSY, PUMP, BOOSTER, HP-2403

SIZE <b>C</b>	DWG. NO. 50005	REV 06
WEIGHT:	SCALE: 1:4.5	SHEET 3 OF 4

BILL OF MATERIALS				
ITEM NO.	QTY	PART NUMBER	DESCRIPTION	MATERIAL
34	2	10011-01	CAP-PLUG, SHIPPING, MALE, 3"DIA, PLA	PLASTIC
35	1	10411-01	CRATE, SHIPPING, 58 X 22 X 14 ID, PUMP, WOOD	HT/KD WOOD

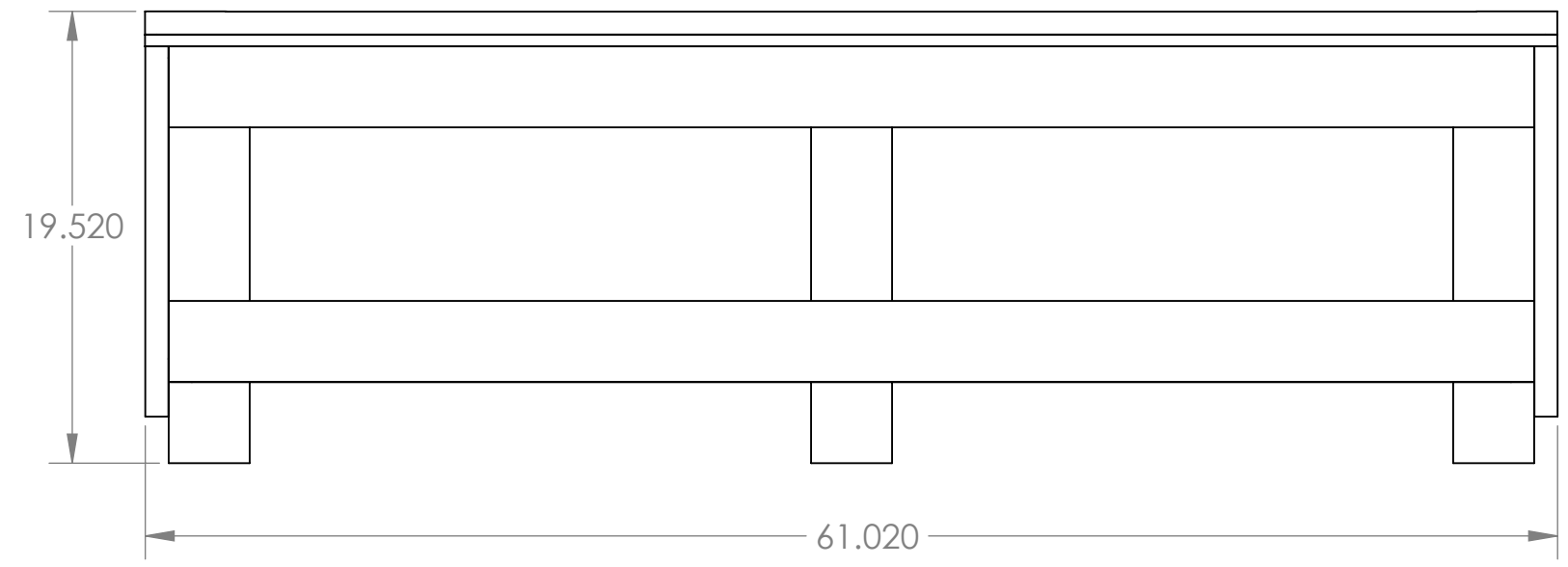
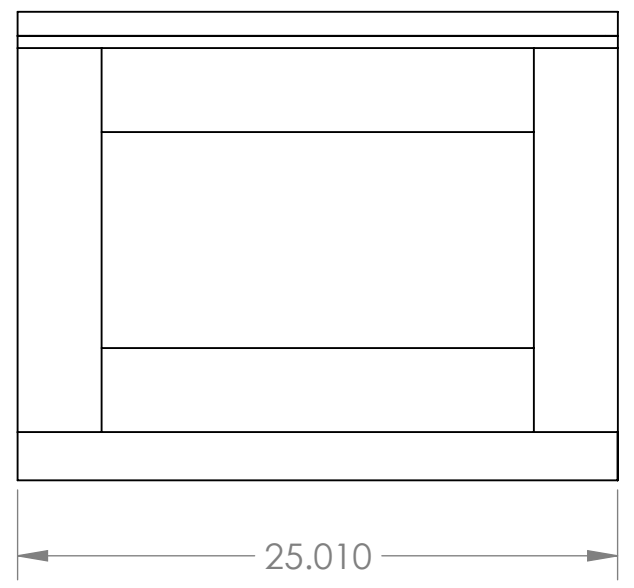


COVER NOT SHOWN




COVER AND ELECTRICAL JUNCTION NOT SHOWN

IF REQUIRED REMOVE ELECTRICAL JUNCTION BOX PRIOR TO PLACING IN CRATE  
 ATTACH BOOSTER PUMP ASSEMBLY TO BOTTOM OF CRATE USING HEX BOLT/WASHER  
 SHORE PUMP TO KEEP FROM SHIFTING OR MOVEMENT INSIDE CRATE DURING TRANSIT



**SHIPPING WEIGHT: 430 LBS / 195 Kgs**

1717 Doolittle Drive  
 San Leandro CA 94577  
[energyrecovery.com](http://energyrecovery.com)  
 P 510.483.7370  
 F 510.483.7371



TITLE:  
**ASSY, PUMP, BOOSTER, HP-2403**

SIZE <b>C</b>	DWG. NO. <b>50005</b>	REV <b>06</b>
WEIGHT:	SCALE: 1:8	SHEET 4 OF 4