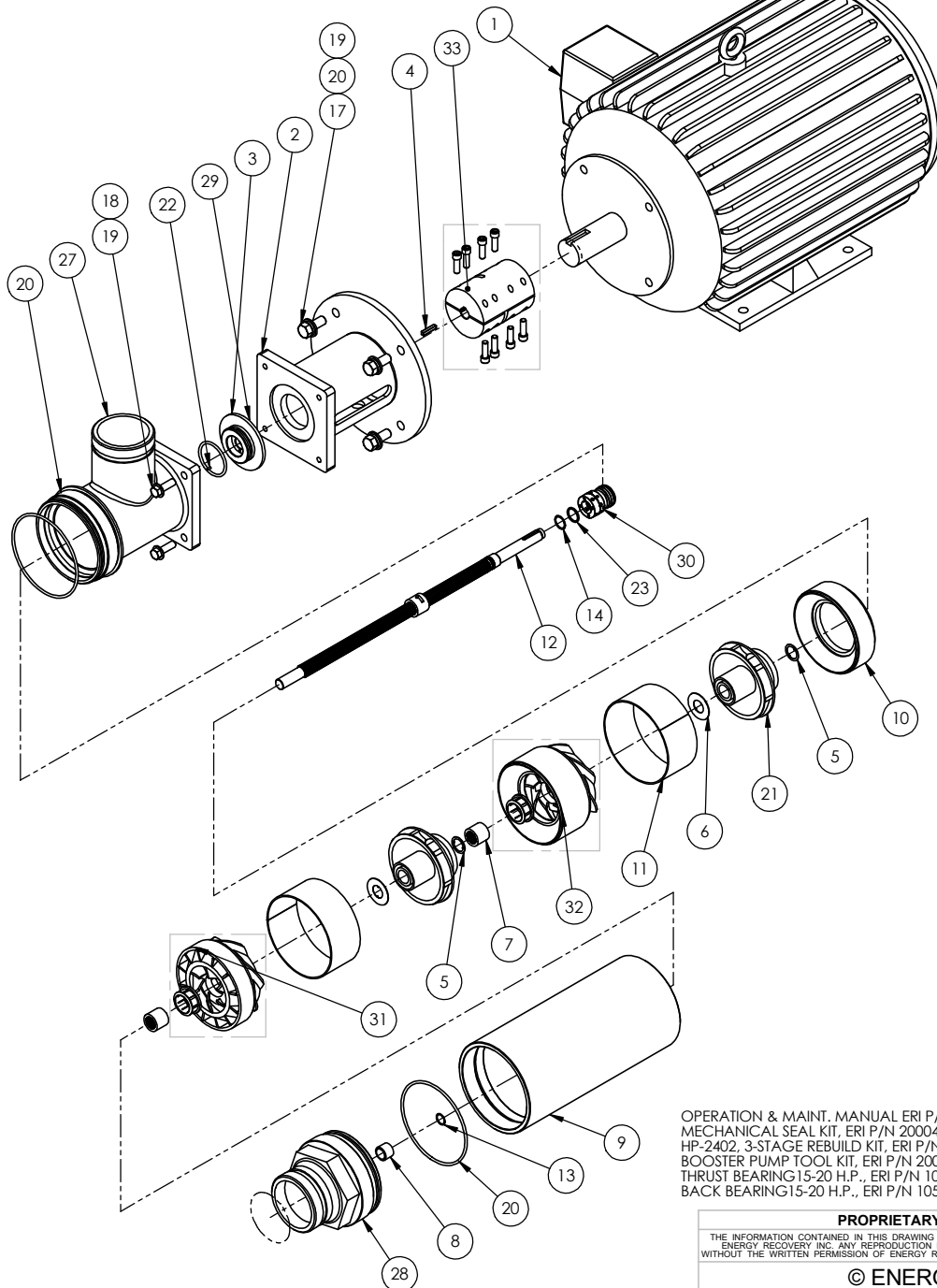


NOTES, UNLESS OTHERWISE SPECIFIED:

1. COAT STEPPED COUPLING BORES AND ALL THREADED FASTENERS WITH ANTI-SIEZE COMPOUND AT ASSEMBLY.
2. USE REQUIRED QTY OF SPACER WASHERS TO ACHIEVE SPACING OUTLINED IN THE OPERATIONS AND MAINTANCE MANUAL.
3. ENERGY RECOVERY INC., RESERVES THE RIGHT TO MAKE CHANGES AT ANY TIME WITHOUT NOTICE.
4. SEE SPECIFICATION 80092-01 FOR SPECIFIC MOTOR OPTIONS.



OPERATION & MAINT. MANUAL ERI P/N 80020-01
 MECHANICAL SEAL KIT, ERI P/N 20004-01
 HP-2402, 3-STAGE REBUILD KIT, ERI P/N 20009-01
 BOOSTER PUMP TOOL KIT, ERI P/N 20003-01
 THRUST BEARING15-20 H.P., ERI P/N 10509-03, 10509-03
 BACK BEARING15-20 H.P., ERI P/N 10510-04, 10510-04

PROPRIETARY
 THE INFORMATION CONTAINED IN THIS DRAWING IS THE SOLE PROPERTY OF ENERGY RECOVERY INC. ANY REPRODUCTION IN PART OR AS A WHOLE WITHOUT THE WRITTEN PERMISSION OF ENERGY RECOVERY INC. IS PROHIBITED.
© ENERGY RECOVERY INC

BILL OF MATERIALS

| ITEM NO. | 50004-01/QTY. | PART NUMBER | DESCRIPTION | MATERIAL |
|----------|---------------|-------------|---|----------|
| 1 | 1 | 51232-XX | MOTOR, 15HP, 380V/50HZ, 460V/60HZ, 254TC, B34R, TECO | |
| 2 | 1 | 51000-01 | ADAPTER, MOTOR, FINISHED, HP-PUMP, ALUMINIUM | ALUM |
| 3 | 1 | 51008-01 | PLATE, SEAL, HP-PUMP, AL6XN | AL6XN |
| 4 | 1 | 51041-01 | KEY, CUT, 3/16" SQ, X 1.00", SHAFT, HP-PUMP, 316 | 316 SS |
| 5 | 5 | 51027-01 | WASHER, SPACER, HP-PUMP, AL6XN | AL6XN |
| 6 | 2 | 51026-01 | WASHER, THRUST, HP-PUMP, AL6XN | AL6XN |
| 7 | 2 | 51025-01 | BEARING, JOURNAL, HP-PUMP, AL6XN | AL6XN |
| 8 | 1 | 51003-01 | BUSHING, SLEEVE, HP-PUMP, RULON | RULON |
| 9 | 1 | 51011-05 | SHELL, HP-2402, HP-PUMP, AL6XN | AL6XN |
| 10 | 1 | 51033-01 | DIFFUSER, INLET, HP-PUMP, 2400 | PVC |
| 11 | 2 | 51031-01 | SLEEVE, IMPELLER, HP-2400, HP-PUMP, AL6XN | AL6XN |
| 12 | 1 | 51055-01 | SHAFT, HP-2402, ASSY, ALL-SPLINE, AL6XN | AL6XN |
| 13 | 1 | 10061-01 | RING, RETAINING, SHAFT, .625", 276 | C276 |
| 14 | 1 | 10066-01 | RING, RETAINING, SHAFT, .750", 276 | C276 |
| 15 | 4 | 10068-01 | WASHER, FLAT, 1/2" ID, .875" OD, 18-8 | 18-8 SS |
| 16 | 4 | 10044-01 | WASHER, LOCK, 1/2" ID, 316 | 316 SS |
| 17 | 4 | 10067-01 | SCREW, HEX-HEAD, 1/2"-13, X 1.25", 316 | 316 SS |
| 18 | 4 | 10038-01 | WASHER, FLAT, 3/8" ID, 316 | 316 SS |
| 19 | 4 | 10070-01 | SCREW, HEX-HEAD, 3/8"-16, X 1.25", 316 | 316 SS |
| 20 | 2 | 10163-01 | O-RING, EPDM, 249 | EPDM |
| 21 | 2 | 10148-01 | IMPELLER, PUMP, 2400, NORLYL | NORLYL |
| 22 | 1 | 10117-01 | DOWEL, PIN, 3/32" DIA, X 1/4", NSF, ACE | ACETAL |
| 23 | 1 | 10122-01 | SPACER, 0875" OD, .75" ID, X .06", PVC | PVC |
| 24 | 2 | 51218-01 | HOUSING GUARD (CE ONLY, NOT SHOWN) | VINYL |
| 25 | 1 | 30208-01 | TAG, HP-PUMP, CE CERTIFICATION (CE ONLY, NOT SHOWN) | ALUM |
| 26 | 1 | 30024-01 | LABEL, SERIAL NUMBER | ALUM |
| 27 | 1 | 51066-01 | HOUSING, SUCTION, IC, HP-PUMP, AL6XN | AL6XN |
| 28 | 1 | 51064-01 | END-CAP, FINISHED, IC, HP-PUMP, AL6XN | AL6XN |
| 29 | 1 | 10160-01 | O-RING, EPDM, 225 | EPDM |
| 30 | 1 | 10123-01 | SEAL, MECHANICAL, SHAFT, 316 | 316SS |
| 31 | 1 | 10144-01 | DIFFUSER, PLATE, PUMP, 2400, NORLYL | NORLYL |
| 32 | 1 | 10140-01 | DIFFUSER, BOWL, PUMP, 2400, NORLYL | NORLYL |
| 33 | 1 | 51030-01 | COUPLING, SHAFT, RIGID, STEPPED, 5/8" X 1-5/8", HP-PUMP, TITANIUM | TITANIUM |

| TOP LEVEL ASSEMBLIES | 50004-01 | 50004-03 | 50004-31 | 50004-33 |
|--|-----------|-----------|-----------|-----------|
| MOTOR CONFIG : | 460V/60HZ | 380V/50HZ | 460V/60HZ | 380V/50HZ |
| MOTOR P/N : | 51232-01 | 51232-01 | 51232-31 | 51232-31 |
| STANDARD MOTOR - DUAL VOLTAGE - 460V/60HZ, 380V/50HZ | X | X | | |
| STANDARD MOTOR - DUAL VOLTAGE - 460V/60HZ, 380V/50HZ - CE CERT | | | X | X |

| REV. | ECN NO. | DESCRIPTION | SW | DATE |
|------|---------|---|-----|------------|
| 07 | | CORRECTED MOTOR WIDTH DIMENSION | SW | 7/9/25 |
| 06 | 0749 | REMOVED SCREWS OF COUPLING, BUSHING OF DIFFUSER OUT OF BOM | KT | 6/10/22 |
| - | 0742 | QTY. FOR ITEM P/N: 51218-01 CHANGED FROM 1 TO 2 | AL | 10/05/21 |
| 05 | 0732 | UPDATED 30205-01 CE TAG TO 30208-01, ADDED NOTE 1 & DIMS OF CENTER OF MASS ON SHEET 2 | YR | 05/13/21 |
| 04 | 0722 | MADE CHANGES TO THE OAL DUE TO NEW MOTORS, ADDED CONFIGURATION TABLE, MADE CHANGES TO BEARING P/N | SD | 5/4/2021 |
| 03 | - | ADDED NEW TABULATION -05: ADDED 26, 28, 29, 31 BUBBLES | BK | 2/13/15 |
| 3 | 408 | ADDED NEW TABULATIONS -03 & -04 | TDR | 4/4/13 |
| 1 | 04-066 | CHANGE TO ALL SPLINE SHAFT | RAC | 09/01/2004 |

UNLESS OTHERWISE SPECIFIED:

Production

1717 Doolittle Drive
 San Leandro CA 94577
energyrecovery.com
 P 510.483.7370
 F 510.483.7371

energy recovery

DRAWING STATUS

| | | |
|-----------|-----|------------|
| DRAWN | RAC | 05/12/2003 |
| CHECKED | RLS | 05/28/2003 |
| ENG APPR. | RLS | 05/28/2003 |

TITLE: **ASSY, PUMP, BOOSTER, HP-2402**

SIZE **C** DWG. NO. **50004** REV **06**

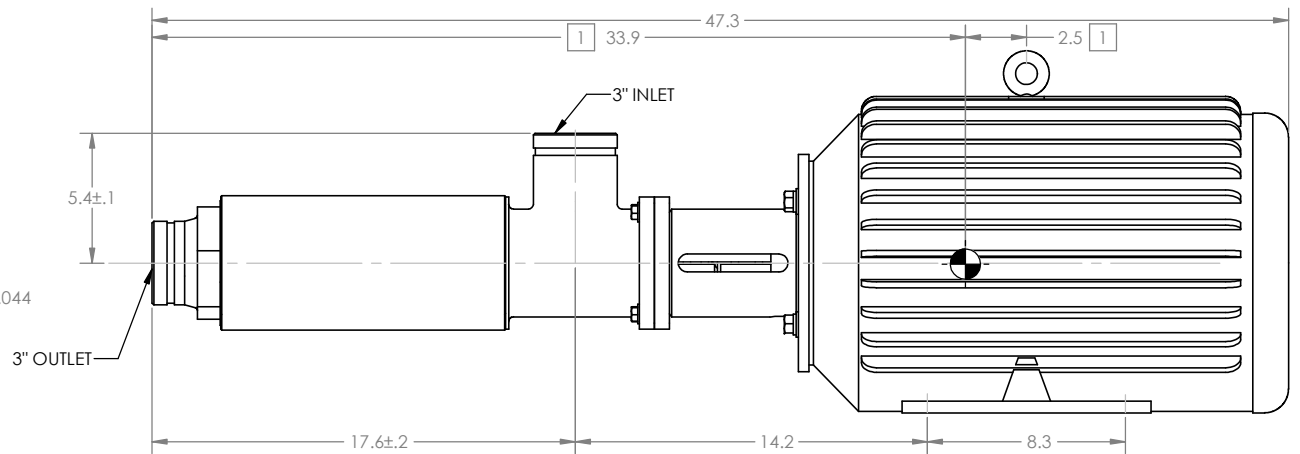
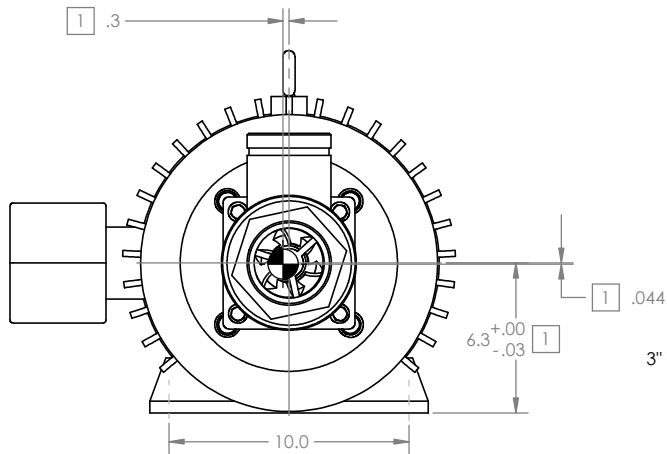
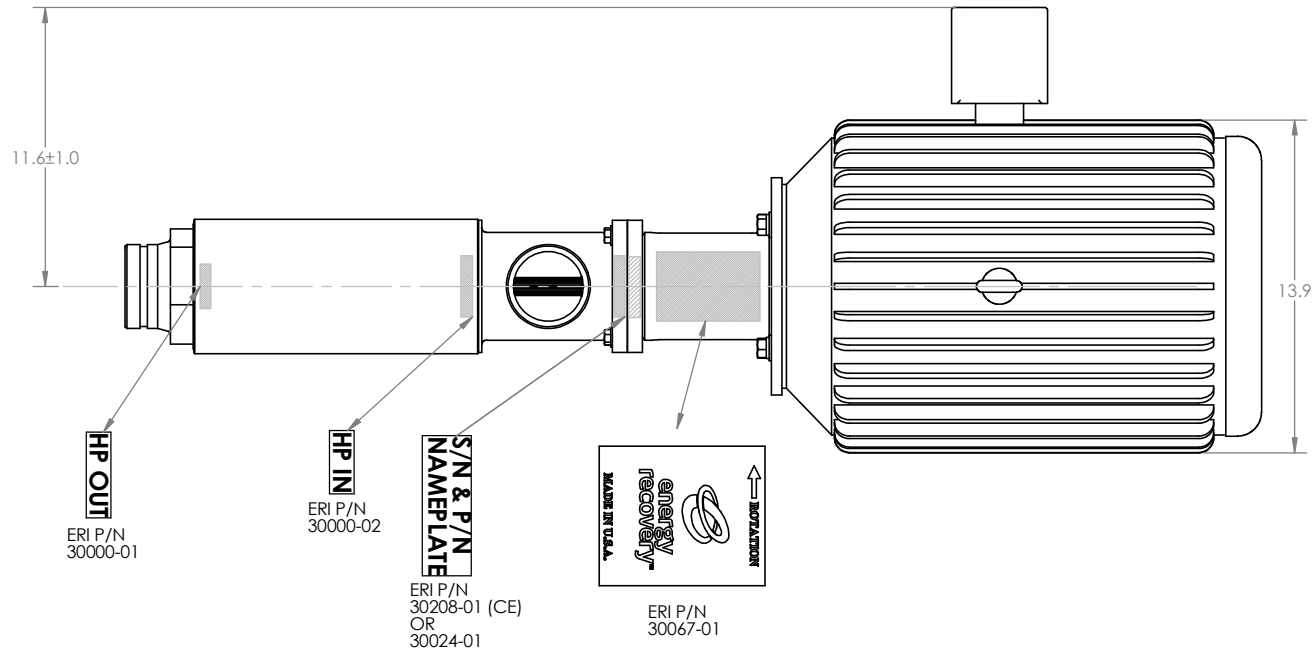
WEIGHT: SCALE: 1:4.5 SHEET 1 OF 3

THIRD ANGLE PROJECTION

DIMENSIONING AND TOLERANCING PER ANSI Y14.5M (LATEST)

NOTES, UNLESS OTHERWISE SPECIFIED:

1. CENTER OF MASS DIMENSIONS FOR ASSEMBLY ARE FOR REFERENCE ONLY.
2. MOTORS ARE CUSTOMIZED TO EMPLOY A SPECIAL THRUST BEARING. CONTACT ENERGY RECOVERY INC. FOR REPLACEMENT OR REPAIR.
3. ENERGY RECOVERY INC. RESERVES TO RIGHT TO MAKE SPECIFICATION OR DIMENSION CHANGES WITHOUT NOTICE.
4. LABEL LOCATIONS ARE APPROX AS SHOWN.



OVERALL DIMENSIONS LABEL LOCATIONS

PROPRIETARY
THE INFORMATION CONTAINED IN THIS DRAWING IS THE SOLE PROPERTY OF ENERGY RECOVERY INC. ANY REPRODUCTION IN PART OR AS A WHOLE WITHOUT THE WRITTEN PERMISSION OF ENERGY RECOVERY INC. IS PROHIBITED.

© ENERGY RECOVERY INC

UNLESS OTHERWISE SPECIFIED:

DIMENSIONS ARE IN INCHES

TOLERANCES:
FRACTIONAL: ± 1/32"
ANGULAR: MACH: 5° BEND ±1°
TWO PLACE DECIMAL: ±.01"
THREE PLACE DECIMAL: ±.005"
FOUR PLACE DECIMAL: ±.0002"

DIMENSIONING AND TOLERANCING
PER ANSI Y14.5M (LATEST)

Production

| DRAWING STATUS | | |
|----------------|-----|------------|
| DRAWN | RAC | 05/12/2003 |
| CHECKED | TLS | 05/28/2003 |
| ENG APPR. | RLS | 05/28/2003 |



1717 Doolittle Drive
San Leandro CA 94577
energyrecovery.com
P 510.483.7370
F 510.483.7371

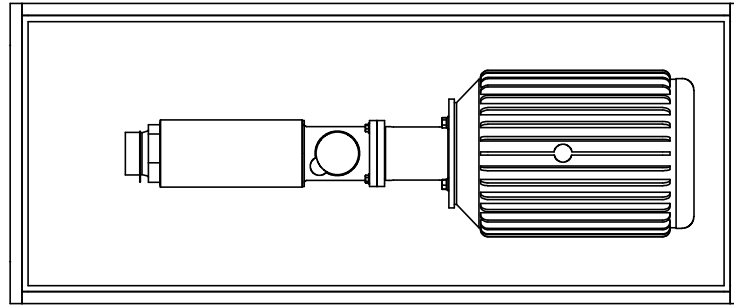


TITLE:
ASSY, PUMP, BOOSTER, HP-2402

SIZE **C** DWG. NO. **50004** REV **06**

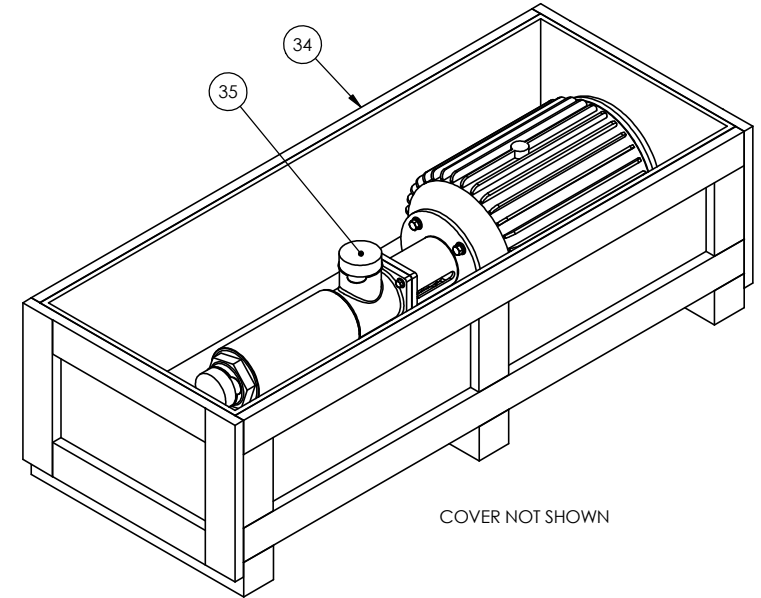
WEIGHT: SCALE: 1:4 SHEET 2 OF 3

| BILL OF MATERIALS | | | | |
|-------------------|------|-------------|--|------------|
| ITEM NO. | QTY. | PART NUMBER | DESCRIPTION | MATERIAL |
| 34 | 1 | 10411-01 | CRATE, SHIPPING, 58 X 22 X 14 ID, PUMP, WOOD | PLASTIC |
| 35 | 2 | 10011-01 | CAP-PLUG, SHIPPING, MALE, 3" DIA, PLA | HT/KD WOOD |

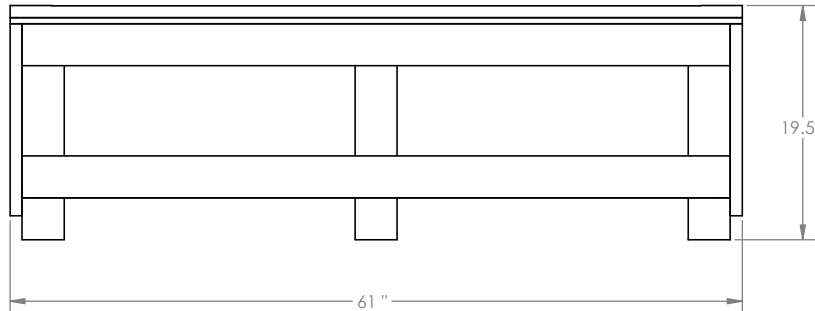
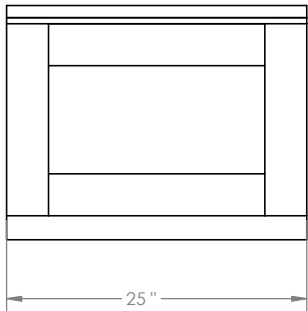


COVER AND ELECTRICAL JUNCTION NOT SHOWN

IF REQUIRED REMOVE ELECTRICAL JUNCTION BOX PRIOR TO PLACING IN CRATE
 ATTACH BOOSTER PUMP ASSEMBLY TO BOTTOM OF CRATE USING HEX BOLT/WASHER
 SHORE PUMP TO KEEP FROM SHIFTING OR MOVEMENT INSIDE CRATE DURING TRANSIT



COVER NOT SHOWN



SHIPPING WEIGHT: 380 LBS / 172.3 Kgs

UNLESS OTHERWISE SPECIFIED:

DIMENSIONS ARE IN INCHES

TOLERANCES:
 FRACTIONAL: ± 1/32"
 ANGULAR: MACH: 5° BEND ± 1°
 TWO PLACE DECIMAL: ± .01"
 THREE PLACE DECIMAL: ± .005"
 FOUR PLACE DECIMAL: ± .0002"

DIMENSIONING AND TOLERANCING
 PER ANSI Y14.5M (LATEST)

PROPRIETARY

THE INFORMATION CONTAINED IN THIS DRAWING IS THE SOLE PROPERTY OF
 ENERGY RECOVERY INC. ANY REPRODUCTION IN PART OR AS A WHOLE
 WITHOUT THE WRITTEN PERMISSION OF ENERGY RECOVERY INC. IS PROHIBITED.

© ENERGY RECOVERY INC

Production

| DRAWING STATUS | | |
|----------------|-----|------------|
| DRAWN | RAC | 05/12/2003 |
| CHECKED | TLS | 05/28/2003 |
| ENG APPR. | RLS | 05/28/2003 |

1717 Doolittle Drive
 San Leandro CA 94577
energyrecovery.com
 P 510.483.7370
 F 510.483.7371



TITLE:
ASSY, PUMP, BOOSTER, HP-2402



SIZE **C** DWG. NO. **50004** REV **06**

WEIGHT: SCALE: 1:8 SHEET 3 OF 3