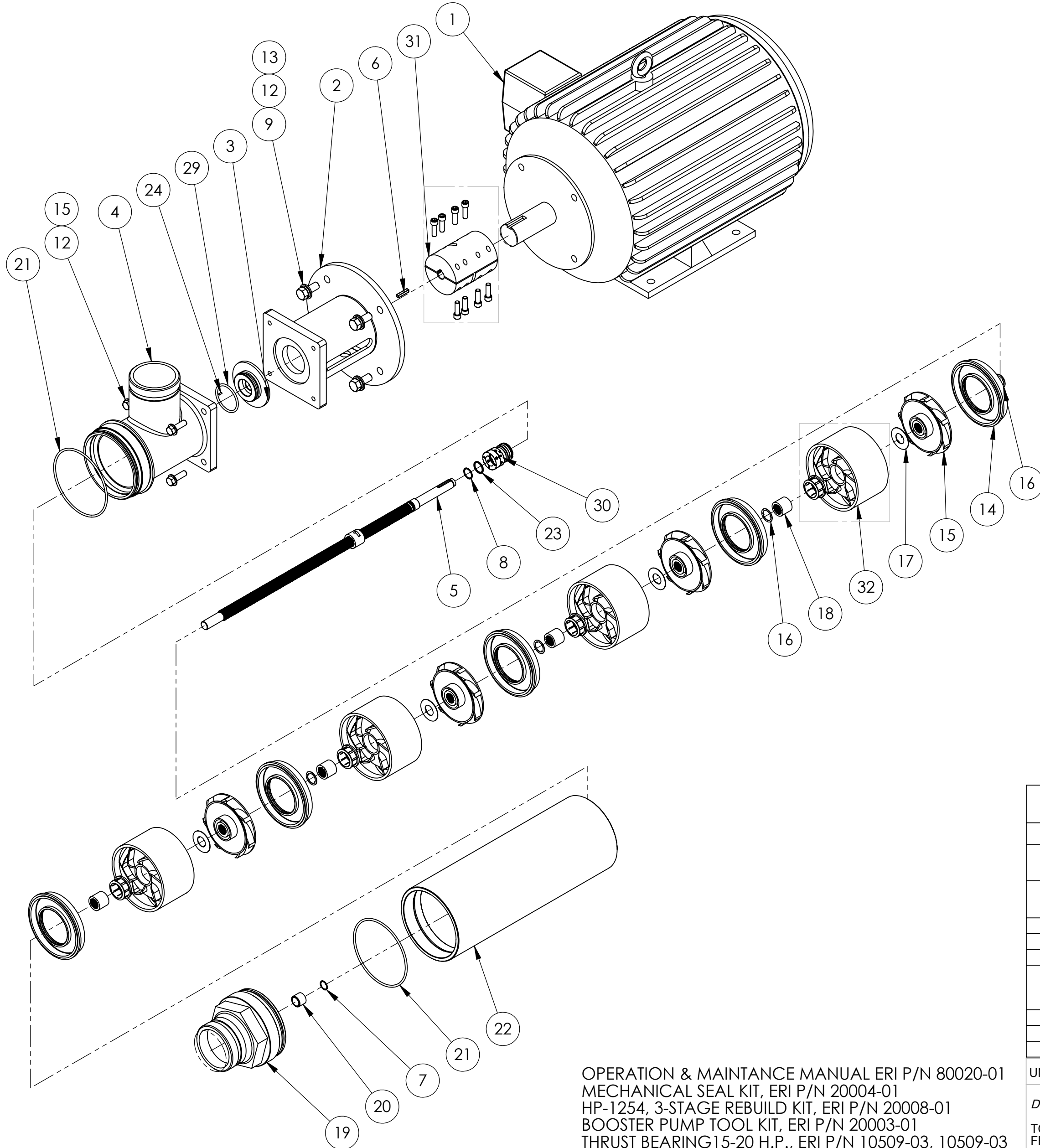


NOTES, UNLESS OTHERWISE SPECIFIED:

1. COAT STEPPED COUPLING BORES AND ALL THREADED FASTENERS WITH ANTI-SIEZE COMPOUND AT ASSEMBLY.
2. USE REQUIRED QTY OF SPACER WASHERS TO ACHIEVE SPACING OUTLINED IN THE OPERATIONS AND MAINTANCE MANUAL.
3. ENERGY RECOVERY INC., RESERVES THE RIGHT TO MAKE CHANGES AT ANY TIME WITHOUT NOTICE.
4. SEE SPECIFICATION 80092-01 FOR SPECIFIC MOTOR OPTIONS



OPERATION & MAINTANCE MANUAL ERI P/N 80020-01
 MECHANICAL SEAL KIT, ERI P/N 20004-01
 HP-1254, 3-STAGE REBUILD KIT, ERI P/N 20008-01
 BOOSTER PUMP TOOL KIT, ERI P/N 20003-01
 THRUST BEARING 15-20 H.P., ERI P/N 10509-03, 10509-04
 BACK BEARING 15-20 H.P., ERI P/N 10510-04, 10510-04

PROPRIETARY
 THE INFORMATION CONTAINED IN THIS DRAWING IS THE SOLE PROPERTY OF ENERGY RECOVERY INC. ANY REPRODUCTION IN PART OR AS A WHOLE WITHOUT THE WRITTEN PERMISSION OF ENERGY RECOVERY INC. IS PROHIBITED.

© ENERGY RECOVERY INC

ITEM NO.	QTY.	PART NUMBER	DESCRIPTION	MATERIAL
1	1	51232-XX	MOTOR, 15HP, 380V/50HZ, 460V/60HZ, 254TC, B34R, TECO	
2	1	51000-01	ADAPTER, MOTOR, FINISHED, HP-PUMP, ALUMINIUM	ALUM
3	1	51008-01	PLATE, SEAL, HP-PUMP, AL6XN	AL6XN
4	1	51066-01	HOUSING, SUCTION, IC, HP-PUMP, AL6XN	AL6XN
5	1	51054-01	SHAFT, HP-1254, ASSY, ALL-SPLINE, AL6XN	AL6XN
6	1	51041-01	KEY, CUT, 3/16" SQ, X 1.00", SHAFT, HP-PUMP, 316	316 SS
7	1	10061-01	RING, RETAINING, SHAFT, .625", 276	C276
8	1	10066-01	RING, RETAINING, SHAFT, .750", 276	C276
9	4	10068-01	WASHER, FLAT, 1/2" ID, .875" OD, 18-8	18-8 SS
10	4	10044-01	WASHER, LOCK, 1/2" ID, 316	316 SS
11	4	10067-01	SCREW, HEX-HEAD, 1/2"-13, X 1.25", 316	316 SS
12	4	10038-01	WASHER, FLAT, 3/8" ID, 316	316 SS
13	4	10070-01	SCREW, HEX-HEAD, 3/8"-16, X 1.25", 316	316 SS
14	5	10143-01	DIFFUSER, PLATE, PUMP, 1200, NORYL	NORYL
15	4	10147-01	IMPELLER, PUMP, 1200, NORYL	NORYL
16	8	51027-01	WASHER, SPACER, HP-PUMP, AL6XN	AL6XN
17	4	51026-01	WASHER, THRUST, HP-PUMP, AL6XN	AL6XN
18	4	51025-01	BEARING, JOURNAL, HP-PUMP, AL6XN	AL6XN
19	1	51064-01	END-CAP, FINISHED, IC, HP-PUMP, AL6XN	AL6XN
20	1	51003-01	BUSHING, SLEEVE, HP-PUMP, RULON	RULON
21	2	10163-01	O-RING, EPDM, 249	EPDM
22	1	51011-04	SHELL, HP-1254, HP-PUMP, AL6XN	AL6XN
23	1	10122-01	SPACER, 0875" OD, .75" ID, X .06", PVC	PVC
24	1	10117-01	DOWEL, PIN, 3/32" DIA, X 1/4", NSF, ACE	ACETAL
25	2	51218-01	HOUSING GUARD (CE ONLY, NOT SHOWN)	VINYL
26	1	30208-01	TAG, HP-PUMP, CE CERTIFICATION (CE ONLY, NOT SHOWN)	ALUM
27	1	30024-01	LABEL, SERIAL NUMBER	ALUM
29	1	10160-01	O-RING, EPDM, 225	EPDM
30	1	10123-01	SEAL, MECHANICAL, SHAFT, 316	316SS
31	1	51030-01	COUPLING, SHAFT, RIGID, STEPPED, 5/8" X 1-5/8", HP-PUMP, TITANIUM	TITANIUM
32	4	10139-01	DIFFUSER, BOWL, PUMP, 1200, NORYL	NORYL

TOP LEVEL ASSEMBLIES	50003-01	50003-03	50003-31	50003-33
MOTOR CONFIG.:	460V/60HZ	380V/50HZ	460V/60HZ	380V/50HZ
MOTOR P/N:	51232-01	51232-01	51232-31	51232-31
STANDARD MOTOR - DUAL VOLTAGE - 460V/60HZ, 380V/50HZ	X	X		
STANDARD MOTOR - DUAL VOLTAGE - 460V/60HZ, 380V/50HZ - CE CERT			X	X


REV.	ECN NO.	DESCRIPTION	BY	DATE
06	0749	REMOVED SCREWS OF COUPLING, BUSHING OF DIFFUSER OUT OF BOM	KT	6/10/22
-	0742	QTY. FOR ITEM P/N: 51218-01 CHANGED FROM 1 TO 2.	AL	10/05/21
05	0732	UPDATED 30205-01 CE TAG TO 30208-01; ADDED NOTE 1 & DIMS OF CENTER OF MASS ON SHEET 2	YR	05/13/21
04	0722	MADE CHANGES TO THE OAL DUE TO NEW MOTORS, ADDED CONFIGURATION TABLE, MADE CHANGES TO BEARING P/N	SD	5/4/2021
03	-	REVISED ANNOTATION BUBBLES; BOM	BK	2/18/15
3	0508	ADDED NEW TABULATION -05	TDR	10/23/13
3	408	ADDED NEW TABULATIONS -03 & -04	TDR	4/3/13
2	07-026	UPDATED ITEMS 4 & 30, REMOVED O-RING KIT NOTE AND ADDED BEARING PART NUMBERS NOTE. ALSO REFERENCED MOTOR OPTION SPEC.	FTM	09/11/2007
1	04-065	CHANGE TO ALL SPLINE SHAFT	RAC	09/01/2004

UNLESS OTHERWISE SPECIFIED:

DIMENSIONS ARE IN INCHES

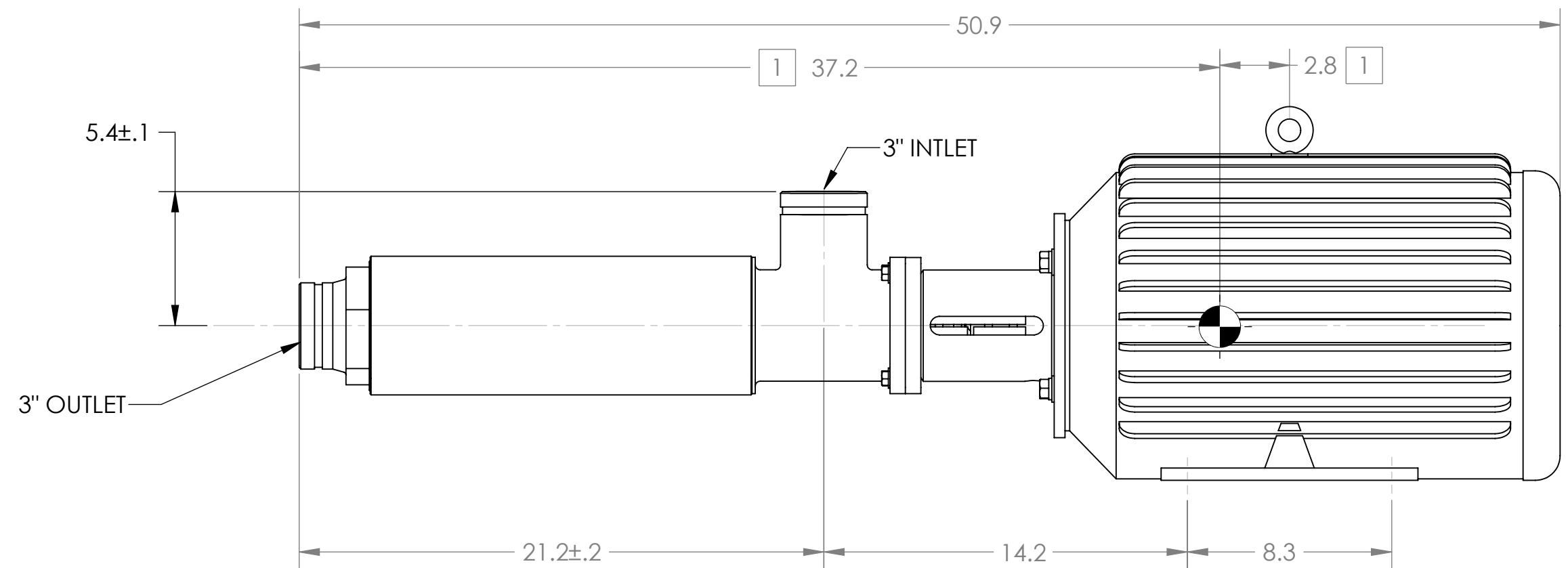
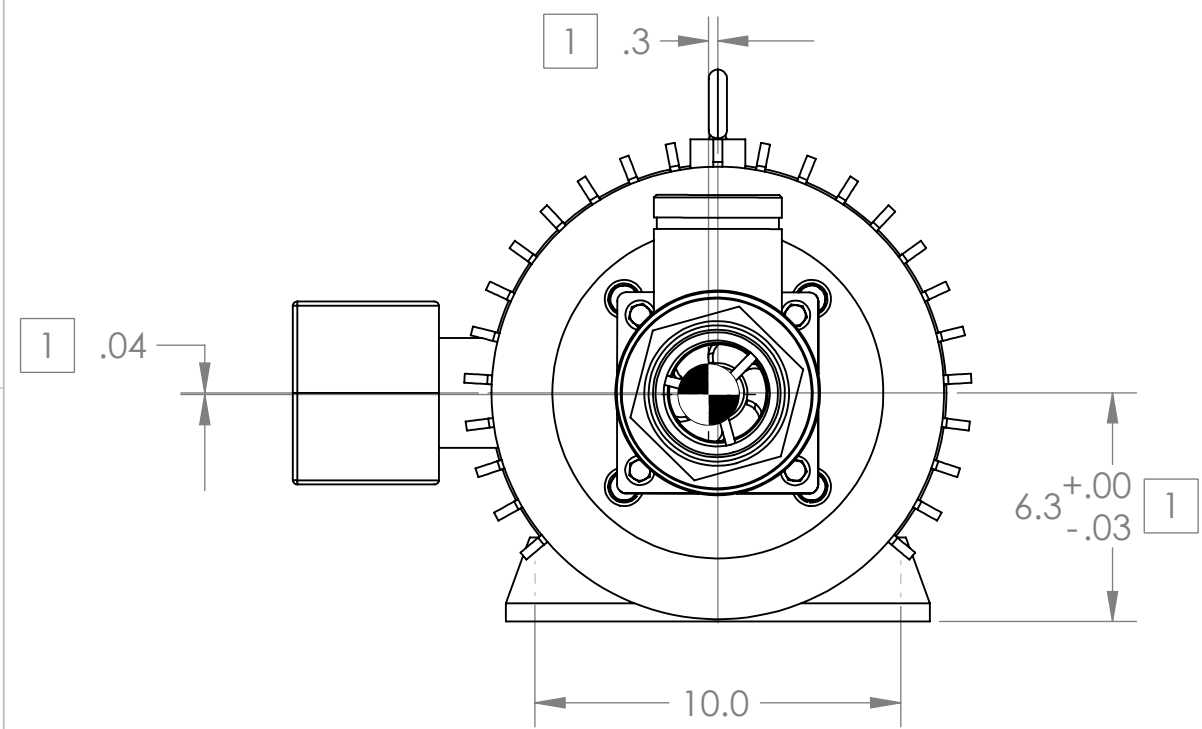
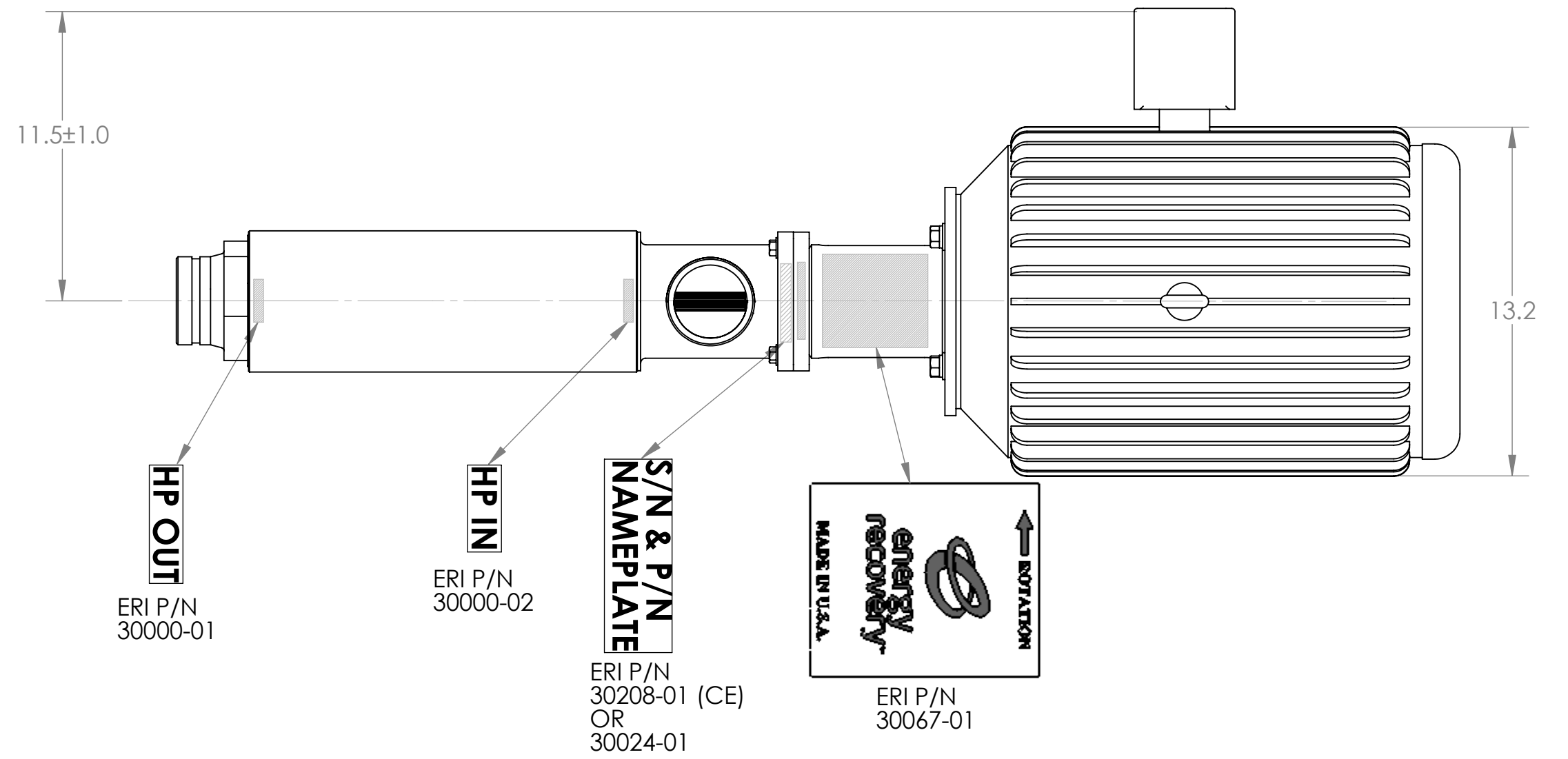
TOLERANCES:
 FRACTIONAL: ± 1/32"
 ANGULAR: MACH ± 5° BEND ± 1°
 TWO PLACE DECIMAL: ± .01"
 THREE PLACE DECIMAL: ± .005"
 FOUR PLACE DECIMAL: ± .0002"

DIMENSIONING AND TOLERANCING PER ANSI Y14.5M (LATEST)

Production		1717 Doolittle Drive San Leandro CA 94577 energyrecovery.com P 510.483.7370 F 510.483.7371		
DRAWING STATUS		TITLE: ASSY, PUMP, BOOSTER, HP-1254		
DRAWN	RAC	05/12/2003	SIZE	DWG. NO.
CHECKED	TLS	05/28/2003	C	50003
ENG APPR.	RLS	05/28/2003	WEIGHT:	SCALE: 1:5.25
THIRD ANGLE PROJECTION		REV		06
		SHEET 1 OF 3		

NOTES, UNLESS OTHERWISE SPECIFIED:

- 1. CENTER OF MASS DIMENSIONS FOR ASSEMBLY ARE FOR REFERENCE ONLY.
- 2. MOTORS ARE CUSTOMIZED TO EMPLOY A SPECIAL THRUST BEARING. CONTACT ENERGY RECOVERY INC. FOR REPLACEMENT OR REPAIR.
- 3. ENERGY RECOVERY INC. RESERVES TO RIGHT TO MAKE SPECIFICATION OR DIMENSION CHANGES WITHOUT NOTICE.
- 4. LABEL LOCATIONS ARE APPROX AS SHOWN.



**OVERALL DIMENSIONS
LABEL LOCATIONS**

1717 Doolittle Drive
San Leandro CA 94577
energyrecovery.com
P 510.483.7370
F 510.483.7371



TITLE:
ASSY, PUMP, BOOSTER, HP-1254

SIZE C	DWG. NO. 50003	REV 06
WEIGHT:	SCALE: 1:5.25	SHEET 2 OF 3

8

7

6

5

4

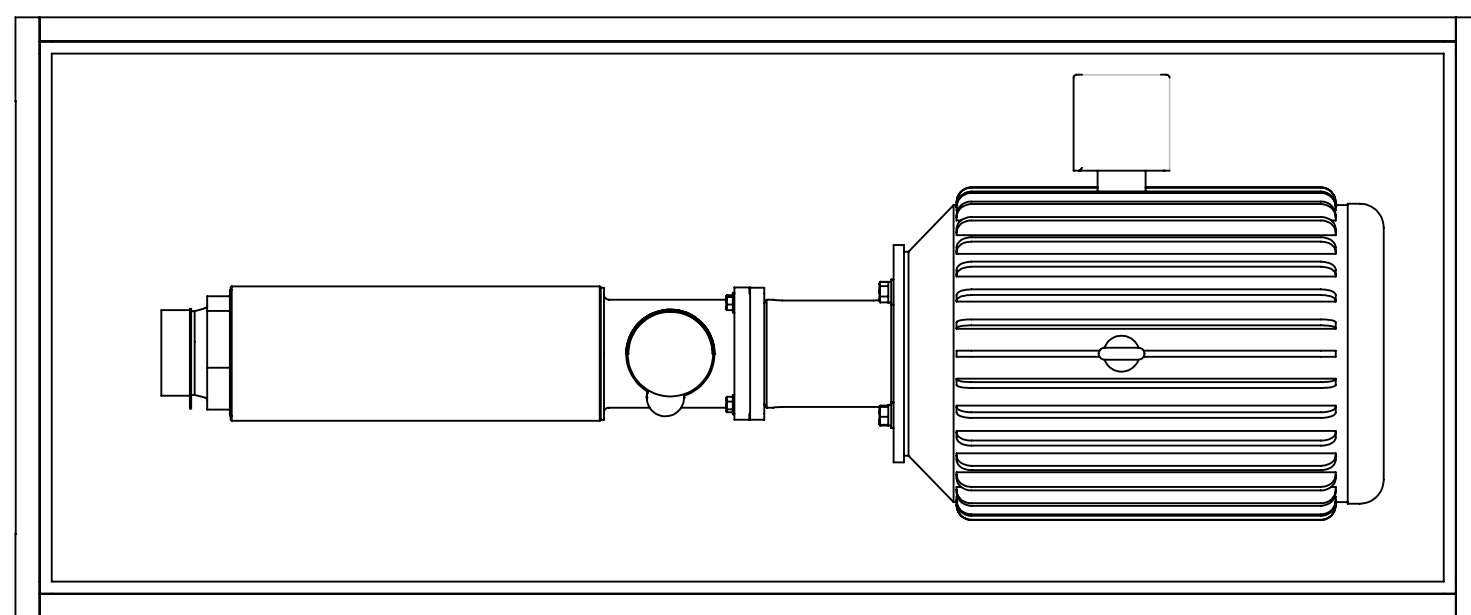
3

2

1

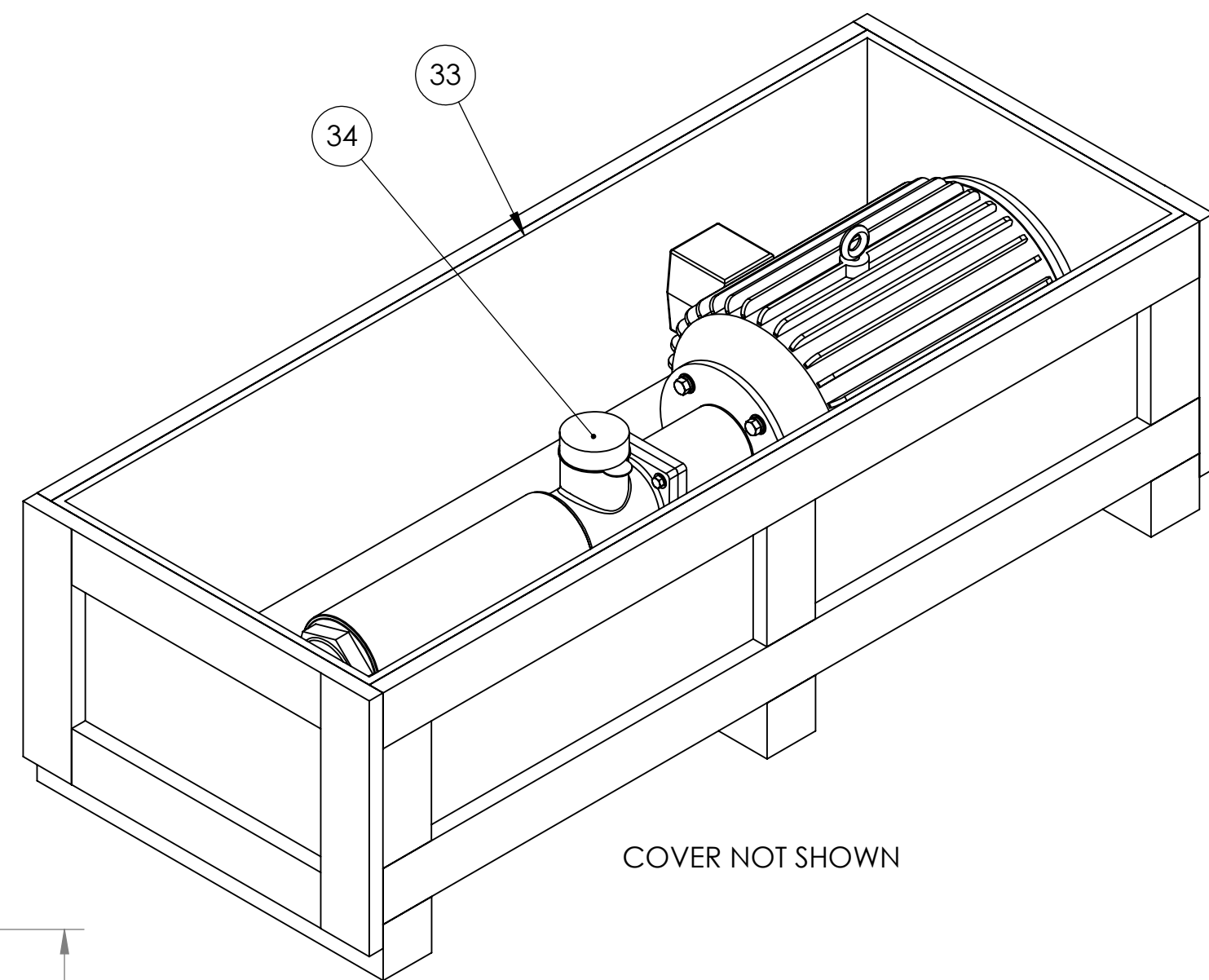
BILL OF MATERIALS

ITEM NO.	QTY	PART NUMBER	DESCRIPTION	MATERIAL
33	1	10411-01	CRATE, SHIPPING, 58 X 22 X 14 ID, PUMP, WOOD	HT/KD WOOD
34	2	10011-01	CAP-PLUG, SHIPPING, MALE, 3"DIA, PLA	PLASTIC

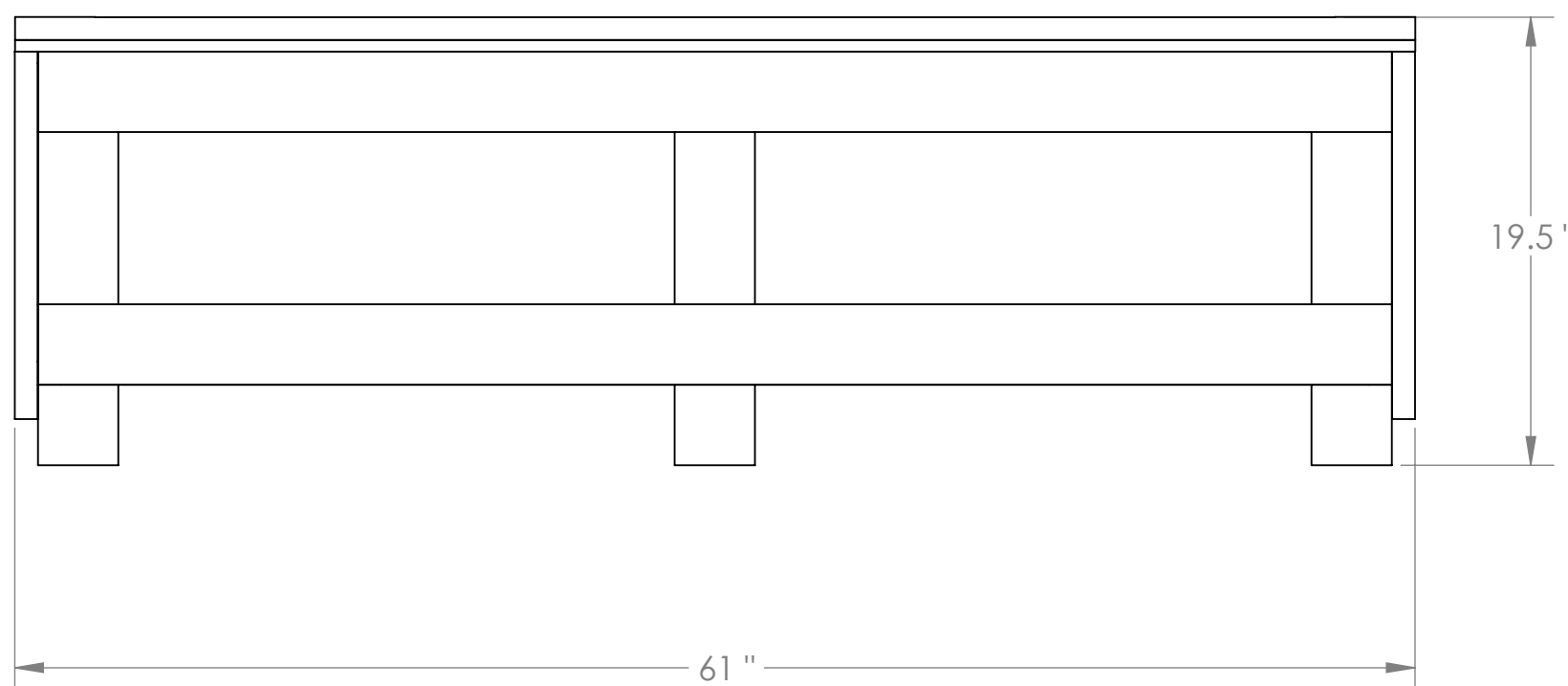
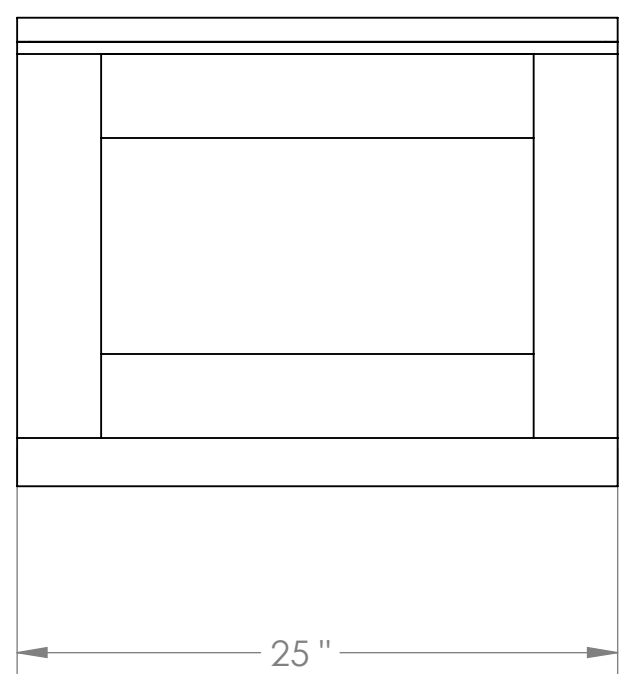


COVER AND ELECTRICAL JUNCTION NOT SHOWN

IF REQUIRED REMOVE ELECTRICAL JUNCTION BOX PRIOR TO PLACING IN CRATE
ATTACH BOOSTER PUMP ASSEMBLY TO BOTTOM OF CRATE USING HEX BOLT/WASHER
SHORE PUMP TO KEEP FROM SHIFTING OR MOVEMENT INSIDE CRATE DURING TRANSIT



COVER NOT SHOWN



SHIPPING WEIGHT: 380 LBS / 172.5 Kgs

1717 Doolittle Drive
San Leandro CA 94577
energyrecovery.com
P 510.483.7370
F 510.483.7371



TITLE:
ASSY, PUMP, BOOSTER, HP-1254

SIZE C	DWG. NO. 50003	REV 06
WEIGHT:	SCALE: 1:8	SHEET 3 OF 3

8

7

6

5

4

3

2

1